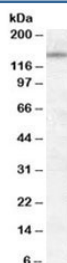


## DLG1 Antibody / SAP97 (R34915)

Catalog No.	Formulation	Size
R34915-100UG	0.5 mg/ml in 1X TBS, pH7.3, with 0.5% BSA (US sourced) and 0.02% sodium azide	100 ug

[Bulk quote request](#)

Availability	1-3 business days
Species Reactivity	Human
Predicted Reactivity	Mouse, Rat
Format	Antigen affinity purified
Host	Goat
Clonality	Polyclonal (goat origin)
Isotype	Goat Ig
Purity	Antigen affinity
Gene ID	1739
Applications	Western Blot : 0.3-1ug/ml ELISA (peptide) LOD : 1:16000
Limitations	This DLG1 antibody is available for research use only.



Western blot testing of KELLY cell lysate with DLG1 antibody at 0.3ug/ml. Predicted molecular weight: ~103kDa, routinely observed at ~140kDa (Ref 1).

### Description

Additional name(s) for this target protein: Discs large 1; Synapse-associated protein 97 (SAP97)

### Application Notes

Optimal dilution of the DLG1 antibody should be determined by the researcher.

## Immunogen

Amino acids NSKTRDKGEIPDD were used as the immunogen for this DLG1 antibody.

## Storage

Aliquot and store the DLG1 antibody at -20oC.

## References (1)