

DJ-1 Antibody / PARK7 (F49626)

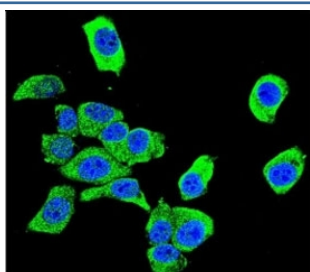
Catalog No.	Formulation	Size
F49626-0.4ML	In 1X PBS, pH 7.4, with 0.09% sodium azide	0.4 ml
F49626-0.08ML	In 1X PBS, pH 7.4, with 0.09% sodium azide	0.08 ml



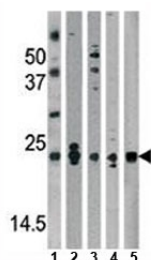
Citations (1)

[Bulk quote request](#)

Availability	1-3 business days
Species Reactivity	Human, Mouse
Predicted Reactivity	Bovine, Zebrafish
Format	Purified
Clonality	Polyclonal (rabbit origin)
Isotype	Rabbit Ig
Purity	Purified
UniProt	Q99497
Localization	Cytoplasmic, nuclear
Applications	Western Blot : 1:1000 Immunofluorescence : 1:10-1:50
Limitations	This DJ-1 antibody is available for research use only.



Confocal immunofluorescent analysis of DJ-1 antibody with HeLa cells followed by Alexa Fluor 488-conjugated goat anti-rabbit IgG (green). DAPI was used as a nuclear counterstain (blue).



Western blot analysis of DJ-1 antibody and mouse 1) brain, 2) kidney, 3) liver tissue lysate, 4) NIH3T3, and 5) human HeLa lysate. Predicted molecular weight ~20 kDa.

Description

Park7/DJ-1 acts as positive regulator of androgen receptor-dependent transcription, and may function as redox-sensitive chaperone and as sensor for oxidative stress, as well as preventing aggregation of SNCA. This protein has been shown to protect neurons against oxidative stress and cell death, and to play a role in fertilization. It is detected in tau inclusions in brains from neurodegenerative disease patients, and is generally highly expressed in pancreas, kidney, skeletal muscle, liver, testis and heart, with detectable levels in placenta, brain, astrocytes, Sertoli cells, spermatogonia, spermatids and spermatozoa. Defects in Park7/DJ-1 are the cause of autosomal recessive early-onset Parkinson disease 7, a form of Parkinson disease characterized by onset before 40 years, slow progression and initial good response to levodopa.

Application Notes

Titration of the DJ-1 antibody may be required due to differences in protocols and secondary/substrate sensitivity.

Immunogen

A portion of amino acids 1-30 from the human protein was used as the immunogen for this DJ-1 antibody.

Storage

Aliquot the DJ-1 antibody and store frozen at -20oC or colder. Avoid repeated freeze-thaw cycles.