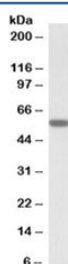


## DIXDC1 Antibody (R33672)

Catalog No.	Formulation	Size
R33672-100UG	0.5 mg/ml in 1X TBS, pH7.3, with 0.5% BSA (US sourced) and 0.02% sodium azide	100 ug

[Bulk quote request](#)

Availability	1-3 business days
Species Reactivity	Human
Predicted Reactivity	Cow, Dog, Mouse, Rat
Format	Antigen affinity purified
Clonality	Polyclonal (goat origin)
Isotype	Goat Ig
Purity	Antigen affinity
Gene ID	85458
Applications	Western Blot : 0.5-2ug/ml ELISA (peptide) LOD : 1:64000
Limitations	This DIXDC1 antibody is available for research use only.



Western blot testing of human skeletal muscle lysate with DIXDC1 antibody at 0.5ug/ml.  
Predicted molecular weight: ~54kDa.

## Description

Additional name(s) for this target protein: DIX domain containing 1

## Application Notes

Optimal dilution of the DIXDC1 antibody should be determined by the researcher.

## Immunogen

Amino acids DVSYHQVDLERE were used as the immunogen for this DIXDC1 antibody.

## **Storage**

Aliquot and store the DIXDC1 antibody at -20oC.