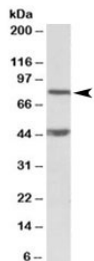


Dishevelled Antibody / DVL1 (R35116)

Catalog No.	Formulation	Size
R35116-100UG	0.5 mg/ml in 1X TBS, pH7.3, with 0.5% BSA (US sourced) and 0.02% sodium azide	100 ug

[Bulk quote request](#)

Availability	1-3 business days
Species Reactivity	Mouse
Predicted Reactivity	Rat, Pig, Cow
Format	Antigen affinity purified
Host	Goat
Clonality	Polyclonal (goat origin)
Isotype	Goat Ig
Purity	Antigen affinity
Gene ID	13542
Applications	Western Blot : 1-3ug/ml ELISA (peptide) LOD : 1:16000
Limitations	This Dishevelled antibody is available for research use only.



Western blot testing of mouse NIH3T3 lysate with Dishevelled antibody at 1ug/ml. The expected ~80kDa band and the additional ~45kDa band are both blocked by the immunizing peptide.

Description

Additional name(s) for this target protein: DVL, DVL1

Application Notes

Optimal dilution of the Dishevelled antibody should be determined by the researcher.

Immunogen

Amino acids PQLEEAPLTVKSD were used as the immunogen for this Dishevelled antibody.

Storage

Aliquot and store the Dishevelled antibody at -20oC.