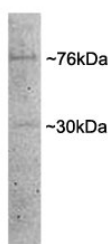


## Dishevelled Antibody / DVL1 (R34525)

Catalog No.	Formulation	Size
R34525-100UG	0.5 mg/ml in 1X TBS, pH7.3, with 0.5% BSA (US sourced) and 0.02% sodium azide	100 ug

[Bulk quote request](#)

Availability	1-3 business days
Species Reactivity	Human, Mouse, Rat, Pig
Format	Antigen affinity purified
Clonality	Polyclonal (goat origin)
Isotype	Goat Ig
Purity	Antigen affinity
Gene ID	1855
Applications	Western Blot : 1-3ug/ml ELISA (peptide) LOD : 1:128000
Limitations	This Dishevelled antibody is available for research use only.



Western blot testing of porcine MII oocyte lysate with Dishevelled antibody at 1ug/ml.  
Predicted molecular weight: ~76kDa.

### Description

Additional name(s) for this target protein: Dvl, Dvl1

### Application Notes

Optimal dilution of the Dishevelled antibody should be determined by the researcher.

### Immunogen

Amino acids KLPVAPERVTAD were used as the immunogen for this Dishevelled antibody.

## Storage

Aliquot and store the Dishevelled antibody at -20oC.