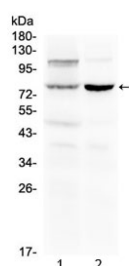


## Dishevelled 2 Antibody (R32637)

Catalog No.	Formulation	Size
R32637	0.5mg/ml if reconstituted with 0.2ml sterile DI water	100 ug

**Bulk quote request**

<b>Availability</b>	1-3 business days
<b>Species Reactivity</b>	Human, Mouse, Rat
<b>Format</b>	Antigen affinity purified
<b>Host</b>	Rabbit
<b>Clonality</b>	Polyclonal (rabbit origin)
<b>Isotype</b>	Rabbit IgG
<b>Purity</b>	Antigen affinity
<b>Buffer</b>	Lyophilized from 1X PBS with 2.5% BSA, 0.025% sodium azide
<b>UniProt</b>	O14641
<b>Applications</b>	Western Blot : 0.5-1ug/ml
<b>Limitations</b>	This Dishevelled 2 antibody is available for research use only.



Western blot testing of 1) rat liver and 2) mouse kidney lysate with Dishevelled 2 antibody at 0.5ug/ml. Predicted molecular weight ~79 kDa, can be observed at 90-95 kDa.

## Description

Segment polarity protein dishevelled homolog DVL-2 is a protein that in humans is encoded by the DVL2 gene. This gene encodes a member of the dishevelled (dsh) protein family. The vertebrate dsh proteins have approximately 40% amino acid sequence similarity with *Drosophila* dsh. This gene encodes a 90-kD protein that undergoes posttranslational phosphorylation to form a 95-kD cytoplasmic protein, which may play a role in the signal transduction pathway mediated by multiple Wnt proteins. The mechanisms of dishevelled function in Wnt signaling are likely to be conserved among metazoans.

## Application Notes

Optimal dilution of the Dishevelled 2 antibody should be determined by the researcher.

## Immunogen

Amino acids 35-64 (AERITLGDFKSVLQRPAGAKYFFKSMDQDF) from the human protein were used as the immunogen for the Dishevelled 2 antibody.

## Storage

After reconstitution, the Dishevelled 2 antibody can be stored for up to one month at 4°C. For long-term, aliquot and store at -20°C. Avoid repeated freezing and thawing.