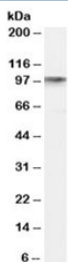


DISC1 Antibody (R34282)

Catalog No.	Formulation	Size
R34282-100UG	0.5 mg/ml in 1X TBS, pH7.3, with 0.5% BSA (US sourced) and 0.02% sodium azide	100 ug

[Bulk quote request](#)

Availability	1-3 business days
Species Reactivity	Human
Format	Antigen affinity purified
Host	Goat
Clonality	Polyclonal (goat origin)
Isotype	Goat Ig
Purity	Antigen affinity
Gene ID	27185
Applications	Western Blot : 0.1-0.3ug/ml ELISA (peptide) LOD : 1:128000
Limitations	This DISC1 antibody is available for research use only.



Western blot testing of human hippocampus lysate with DISC1 antibody at 0.1 ug/ml.
Predicted molecular weight: ~94 kDa.

Description

Additional name(s) for this target protein: Disrupted in schizophrenia 1

Application Notes

Optimal dilution of the DISC1 antibody should be determined by the researcher.

1. This DISC1 antibody is specific for isoforms L and Lv.

Immunogen

Amino acids HSEDKRKTPLKVLE were used as the immunogen for this DISC1 antibody.

Storage

Aliquot and store the DISC1 antibody at -20oC.