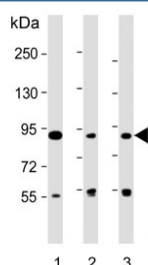


DIEXF Antibody (F54357)

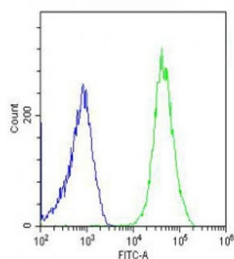
Catalog No.	Formulation	Size
F54357-0.4ML	In 1X PBS, pH 7.4, with 0.09% sodium azide	0.4 ml
F54357-0.08ML	In 1X PBS, pH 7.4, with 0.09% sodium azide	0.08 ml

[Bulk quote request](#)

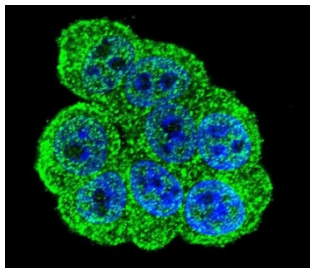
Availability	1-3 business days
Species Reactivity	Human
Format	Purified
Clonality	Polyclonal (rabbit origin)
Isotype	Rabbit Ig
Purity	Antigen affinity purified
UniProt	Q68CQ4
Localization	Nuclear, cytoplasmic
Applications	Immunofluorescence : 1:25 Immunohistochemistry (FFPE) : 1:25 Western Blot : 1:500-1:2000 Flow Cytometry : 1:25 (1x10 ⁶ cells)
Limitations	This DIEXF antibody is available for research use only.



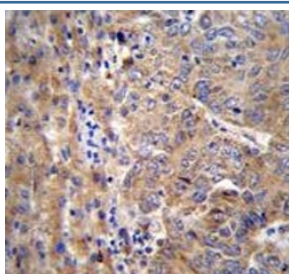
Western blot testing of human 1) HT-1080, 2) K562 and 3) RPMI 8226 cell lysate with DIEXF antibody. Predicted molecular weight ~87 kDa.



Flow cytometry testing of fixed and permeabilized human U-2 OS cells with DIXF antibody; Blue=isotype control, Green= DIXF antibody.



Immunofluorescent staining of fixed and permeabilized human HeLa cells with DIXF antibody (green) and DAPI nuclear stain (blue).



IHC testing of FFPE human hepatocarcinoma with DIXF antibody. HIER: steam section in pH6 citrate buffer for 20 min and allow to cool prior to staining.

Description

Regulates the p53 pathway to control the expansion growth of digestive organs (By similarity).

Application Notes

The stated application concentrations are suggested starting points. Titration of the DIXF antibody may be required due to differences in protocols and secondary/substrate sensitivity.

Immunogen

A portion of amino acids 2-30 from the human protein was used as the immunogen for the DIXF antibody .

Storage

Aliquot the DIXF antibody and store frozen at -20oC or colder. Avoid repeated freeze-thaw cycles.