

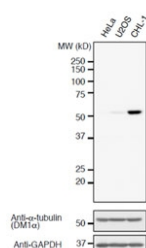
Detyrosinated Alpha Tubulin Antibody [clone RM444] (R20459)

Catalog No.	Formulation	Size
R20459-0.1ML	Antibody in PBS with 50% glycerol, 1% BSA and 0.09% sodium azide	100 ul

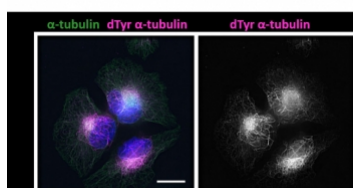
Recombinant RABBIT MONOCLONAL

[Bulk quote request](#)

Availability	1-3 business days
Species Reactivity	Human
Format	Purified
Clonality	Recombinant Rabbit Monoclonal
Isotype	Rabbit IgG
Clone Name	RM444
Purity	Protein A purified from animal origin-free supernatant
UniProt	Q71U36
Applications	Western Blot : 1:500-1:1000 Immunocytochemistry/Immunofluorescence : 1:100-1:200
Limitations	This recombinant Detyrosinated Alpha Tubulin antibody is available for research use only.



Western blot analysis of human HeLa, U2OS, and CHL-1 cell lysates using Detyrosinated Alpha-Tubulin antibody at a 1:1000 dilution. Image courtesy of Dr. Takashi Hotta from Ohi Lab, University of Michigan, USA.



Immunocytochemistry staining of human CHL-1 cells using Detyrosinated Alpha-Tubulin antibody at a 1:200 dilution (pink), anti-alpha-Tubulin antibody (green), and DAPI nuclear stain (blue). Bar: 20um. Image courtesy of Dr. Takashi Hotta from Ohi Lab, University of Michigan, USA.

Description

This antibody reacts to detyrosinated alpha-Tubulin, a posttranslational modification of alpha-tubulin where the C-terminal tyrosine residue has been cleaved.

Application Notes

The stated application concentrations are suggested starting points. Titration of the recombinant Detyrosinated Alpha Tubulin antibody may be required due to differences in protocols and secondary/substrate sensitivity.

Immunogen

A peptide corresponding to human dTyr alpha-tubulin (cleaved C-terminal tyrosine residue) was used as the immunogen for the Detyrosinated Alpha Tubulin antibody.

Storage

Store the recombinant Detyrosinated Alpha Tubulin antibody at -20oC.