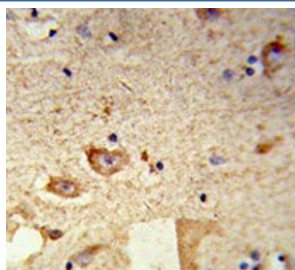


## Dextrin Antibody / DSTN (F55025)

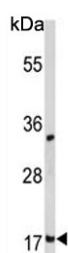
Catalog No.	Formulation	Size
F55025-0.4ML	In 1X PBS, pH 7.4, with 0.09% sodium azide	0.4 ml
F55025-0.08ML	In 1X PBS, pH 7.4, with 0.09% sodium azide	0.08 ml

[Bulk quote request](#)

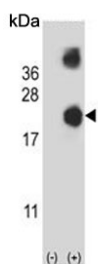
<b>Availability</b>	1-3 business days
<b>Species Reactivity</b>	Human
<b>Format</b>	Purified
<b>Clonality</b>	Polyclonal (rabbit origin)
<b>Isotype</b>	Rabbit Ig
<b>Purity</b>	Antigen affinity purified
<b>UniProt</b>	P60981
<b>Localization</b>	Cytoplasmic, extracellular
<b>Applications</b>	Western Blot : 1:500-1:1000 Flow Cytometry : 1:10-1:50 (1x10 <sup>6</sup> cells) Immunohistochemistry (FFPE) : 1:50-1:100
<b>Limitations</b>	This Dextrin antibody is available for research use only.



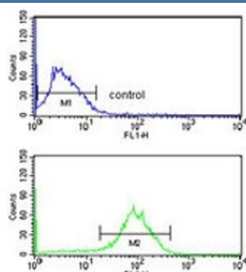
IHC testing of FFPE human brain tissue with Dextrin antibody. HIER: steam section in pH6 citrate buffer for 20 min and allow to cool prior to staining.



Western blot testing of human MCF7 cell lysate with Dextrin antibody. Predicted molecular weight ~19 kDa.



Western blot testing of 1) non-transfected and 2) transfected 293 cell lysate with Destrin antibody.



Flow cytometry testing of human MCF7 cells with Destrin antibody; Blue=isotype control, Green= Destrin antibody.

## Description

DSTN belongs to the actin-binding proteins ADF family. This family of proteins is responsible for enhancing the turnover rate of actin *in vivo*. This protein encodes the actin depolymerizing protein that severs actin filaments (F-actin) and binds to actin monomers (G-actin).

## Application Notes

The stated application concentrations are suggested starting points. Titration of the Destrin antibody may be required due to differences in protocols and secondary/substrate sensitivity.

## Immunogen

A portion of amino acids 70-98 from the human protein was used as the immunogen for the Destrin antibody.

## Storage

Aliquot the Destrin antibody and store frozen at -20oC or colder. Avoid repeated freeze-thaw cycles.