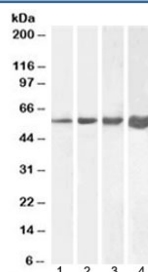


## Desmin Antibody (R35556)

Catalog No.	Formulation	Size
R35556-100UG	0.5 mg/ml in 1X TBS, pH7.3, with 0.5% BSA (US sourced) and 0.02% sodium azide	100 ug

[Bulk quote request](#)

Availability	1-3 business days
Species Reactivity	Human, Mouse, Rat, Pig
Format	Antigen affinity purified
Host	Goat
Clonality	Polyclonal (goat origin)
Isotype	Goat Ig
Purity	Antigen affinity
Gene ID	1674
Localization	Cytoplasmic, membranous
Applications	Western Blot : 0.3-1ug/ml ELISA (peptide) LOD : 1:4000
Limitations	This Desmin antibody is available for research use only.



Western blot testing of 1) human, 2) mouse, 3) rat and 4) pig skeletal muscle lysate with Desmin antibody at 1ug/ml. Predicted molecular weight ~54 kDa.

## Description

Additional name(s) for this target protein: DES, CMD11, CSM1, CSM2

## Application Notes

Optimal dilution of the Desmin antibody should be determined by the researcher.

## Immunogen

Amino acids RDGEVVSEATQQQHE were used as the immunogen for this Desmin antibody.

## Storage

Aliquot and store the Desmin antibody at -20oC.