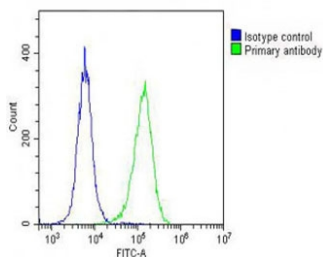


## DEPDC5 Antibody / DEP domain-containing protein 5 (F55083)

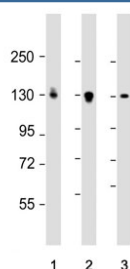
Catalog No.	Formulation	Size
F55083-0.2ML	In 1X PBS, pH 7.4, with 0.09% sodium azide	0.2 ml
F55083-0.05ML	In 1X PBS, pH 7.4, with 0.09% sodium azide	0.05 ml

[Bulk quote request](#)

<b>Availability</b>	1-3 business days
<b>Species Reactivity</b>	Human
<b>Format</b>	Purified
<b>Host</b>	Rabbit
<b>Clonality</b>	Polyclonal (rabbit origin)
<b>Isotype</b>	Rabbit Ig
<b>Purity</b>	Antigen affinity purified
<b>UniProt</b>	O75140
<b>Applications</b>	Western Blot : 1:1000-1:2000 Flow Cytometry : 1:25 per million cells in 0.1ml
<b>Limitations</b>	This DEPDC5 antibody is available for research use only.



Flow cytometry testing of fixed and permeabilized human HeLa cells with DEPDC5 antibody; Blue=isotype control, Green= DEPDC5 antibody.



Western blot testing of human 1) HL60, 2) KG-1 and 3) U-87 MG cell lysate with DEPDC5 antibody. Predicted molecular weight: 131-188 kDa and ~64 kDa (eight isoforms).

## Description

The DEPDC5 gene encodes DEP domain-containing protein 5, a protein which contains a DEP (disheveled, EGL-10, pleckstrin) domain. This domain is known for its involvement in signal transduction and cellular communication, highlighting the importance of DEPDC5 in coordinating crucial cellular processes. DEP domain-containing protein 5 has been implicated in the regulation of cellular signaling pathways, including the mechanistic target of rapamycin complex 1 (mTORC1) pathway. By interacting with key proteins in this pathway, DEPDC5 plays a critical role in maintaining cellular homeostasis and growth. Mutations in the DEPDC5 gene have been linked to various neurological disorders, including familial focal epilepsy.

## Application Notes

The stated application concentrations are suggested starting points. Titration of the DEPDC5 antibody may be required due to differences in protocols and secondary/substrate sensitivity.

## Immunogen

A portion of amino acids 1404-1432 from the human protein was used as the immunogen for the DEPDC5 antibody.

## Storage

Aliquot the DEPDC5 antibody and store frozen at -20°C or colder. Avoid repeated freeze-thaw cycles.