

## DENND1B Antibody (F54541)

Catalog No.	Formulation	Size
F54541-0.4ML	In 1X PBS, pH 7.4, with 0.09% sodium azide	0.4 ml
F54541-0.08ML	In 1X PBS, pH 7.4, with 0.09% sodium azide	0.08 ml

[Bulk quote request](#)

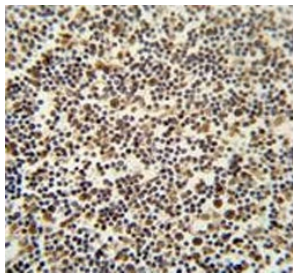
<b>Availability</b>	1-3 business days
<b>Species Reactivity</b>	Human
<b>Format</b>	Purified
<b>Clonality</b>	Polyclonal (rabbit origin)
<b>Isotype</b>	Rabbit Ig
<b>Purity</b>	Antigen affinity purified
<b>UniProt</b>	Q6P3S1
<b>Localization</b>	Cytoplasmic
<b>Applications</b>	Flow Cytometry : 1:25 (1x10e6 cells) Immunohistochemistry (FFPE) : 1:25 Western Blot : 1:500-1:2000
<b>Limitations</b>	This DENND1B antibody is available for research use only.

kDa  
95  
72  
55  
36  
28  
17

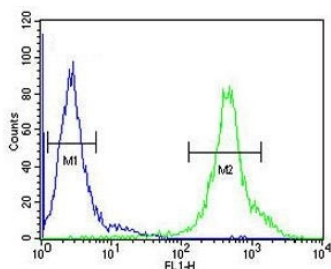
Western blot testing of human NCI-H460 cell lysate with DENND1B antibody. Predicted molecular weight: 34~87 kDa (multiple isoforms).

kDa  
95  
72  
55  
36  
28  
17

Western blot testing of human MOLT4 cell lysate with DENND1B antibody. Predicted molecular weight: 34~87 kDa (multiple isoforms).



IHC testing of FFPE human lymph tissue with DENND1B antibody. HIER: steam section in pH6 citrate buffer for 20 min and allow to cool prior to staining.



Flow cytometry testing of human NCI-H460 cells with DENND1B antibody; Blue=isotype control, Green= DENND1B antibody.

## Description

Clathrin-mediated endocytosis is a major mechanism for internalization of proteins and lipids. Members of the connectin family, such as DENND1B, function as guanine nucleotide exchange factors (GEFs) for the early endosomal small GTPase RAB35 and bind to clathrin and clathrin adaptor protein-2. Thus, connectins link RAB35 activation with the clathrin machinery.

## Application Notes

The stated application concentrations are suggested starting points. Titration of the DENND1B antibody may be required due to differences in protocols and secondary/substrate sensitivity.

## Immunogen

A portion of amino acids 39-68 from the human protein was used as the immunogen for the DENND1B antibody.

## Storage

Aliquot the DENND1B antibody and store frozen at -20°C or colder. Avoid repeated freeze-thaw cycles.