

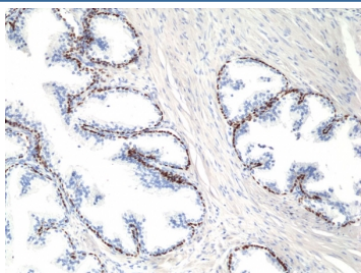
deltaNp63 Antibody / p40 [clone RM392] (R20408)

Catalog No.	Formulation	Size
R20408-0.1ML	Antibody in PBS with 50% glycerol, 1% BSA and 0.09% sodium azide	100 ul

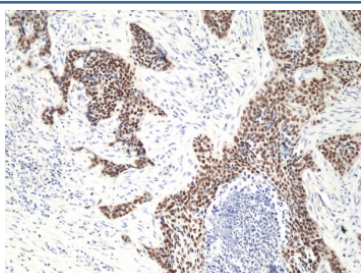
Recombinant **RABBIT MONOCLONAL**

[Bulk quote request](#)

Availability	1-3 business days
Species Reactivity	Human
Format	Purified
Host	Rabbit
Clonality	Recombinant Rabbit Monoclonal
Isotype	Rabbit IgG
Clone Name	RM392
Purity	Protein A purified from animal origin-free supernatant
UniProt	Q9H3D4
Localization	Nuclear
Applications	Immunohistochemistry (FFPE) : 1:50-1:200
Limitations	This recombinant deltaNp63 antibody is available for research use only.



IHC staining of FFPE human prostate tissue with recombinant deltaNp63 antibody at 1:200.



IHC staining of FFPE human lung squamouscarcinoma tissue with recombinant deltaNp63 antibody at 1:50.

Description

This antibody reacts to human p40 (deltaNp63).

Application Notes

The stated application concentrations are suggested starting points. Titration of the recombinant deltaNp63 antibody may be required due to differences in protocols and secondary/substrate sensitivity.

Immunogen

A peptide corresponding to human p40 (deltaNp63) was used as the immunogen for the recombinant deltaNp63 antibody.

Storage

Store the recombinant deltaNp63 antibody at -20oC.