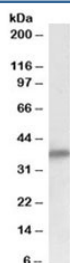


Delta-Sarcoglycan Antibody (R35676)

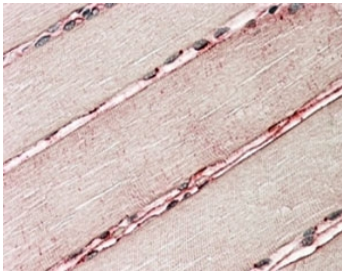
Catalog No.	Formulation	Size
R35676-100UG	0.5 mg/ml in 1X TBS, pH7.3, with 0.5% BSA (US sourced) and 0.02% sodium azide	100 ug

[Bulk quote request](#)

Availability	1-3 business days
Species Reactivity	Human, Rat
Predicted Reactivity	Mouse, Dog, Pig, Cow
Format	Antigen affinity purified
Host	Goat
Clonality	Polyclonal (goat origin)
Isotype	Goat Ig
Purity	Antigen affinity
Gene ID	6444
Applications	Western Blot : 0.1-0.3ug/ml Immunohistochemistry (FFPE) : 3-5ug/ml ELISA (peptide) LOD : 1:16000
Limitations	This delta-Sarcoglycan antibody is available for research use only.



Western blot testing of human heart lysate with delta-Sarcoglycan antibody at 0.1ug/ml.
Predicted molecular weight: ~35kDa.



IHC staining of FFPE human skeletal muscle with delta-Sarcoglycan antibody at 3.8ug/ml. HIER: steamed with pH6 citrate buffer, AP-staining. Sarcolemmar staining of the fibers is seen.

Description

Additional name(s) for this target protein: SGCD; sarcoglycan, delta (35kDa dystrophin-associated glycoprotein); 35DAG

Application Notes

Optimal dilution of the delta-Sarcoglycan antibody should be determined by the researcher.

1. This delta-Sarcoglycan antibody will detect isoforms 1 and 3.

Immunogen

Amino acids RLPHGSYTPTGTR were used as the immunogen for this delta-Sarcoglycan antibody. This sequence is specific to isoforms 1 and 3.

Storage

Aliquot and store the delta-Sarcoglycan antibody at -20oC.