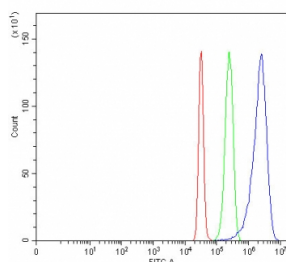


Delta-like protein 4 Antibody / DLL4 (RQ8009)

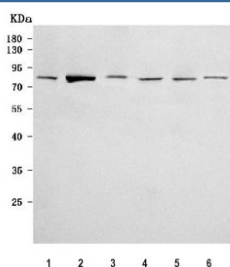
Catalog No.	Formulation	Size
RQ8009	0.5mg/ml if reconstituted with 0.2ml sterile DI water	100 ug

Bulk quote request

Availability	1-3 business days
Species Reactivity	Human, Mouse, Rat
Format	Antigen affinity purified
Clonality	Polyclonal (rabbit origin)
Isotype	Rabbit IgG
Purity	Antigen affinity purified
Buffer	Lyophilized from 1X PBS with 2% Trehalose
UniProt	Q9NR61
Applications	Western Blot : 0.5-1ug/ml Flow Cytometry : 1-3ug/million cells Direct ELISA : 0.1-0.5ug/ml
Limitations	This Delta-like protein 4 antibody is available for research use only.



Flow cytometry testing of fixed and permeabilized human HepG2 cells with Delta-like protein 4 antibody at 1ug/million cells (blocked with goat sera); Red=cells alone, Green=isotype control, Blue= Delta-like protein 4 antibody.



Western blot testing of 1) human A431, 2) human 293T, 3) human Caco-2, 4) human PC-3, 5) rat brain and 6) mouse brain tissue lysate with Delta-like protein 4 antibody. Predicted molecular weight ~75 kDa but may be observed at higher molecular weights due to glycosylation.

Description

Delta-like 4 is a protein that in humans is encoded by the DLL4 gene. It is mapped to 15q15.1. This gene is a homolog of the Drosophila delta gene. The delta gene family encodes Notch ligands that are characterized by a DSL domain, EGF repeats, and a transmembrane domain. And this gene plays an important role in promoting Th17 effector activity during mycobacterial challenge.

Application Notes

Optimal dilution of the Delta-like protein 4 antibody should be determined by the researcher.

Immunogen

E. coli-derived recombinant human protein (amino acids S27-E678) was used as the immunogen for the Delta-like protein 4 antibody.

Storage

After reconstitution, the Delta-like protein 4 antibody can be stored for up to one month at 4oC. For long-term, aliquot and store at -20oC. Avoid repeated freezing and thawing.