

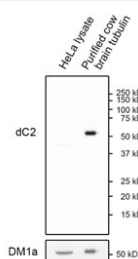
Delta 2-Alpha-Tubulin Antibody / dC2 [clone RM447] (R20462)

Catalog No.	Formulation	Size
R20462-0.1ML	Antibody in PBS with 50% glycerol, 1% BSA and 0.09% sodium azide	100 ul

Recombinant **RABBIT MONOCLONAL**

[Bulk quote request](#)

Availability	1-3 business days
Species Reactivity	Human
Format	Purified
Host	Rabbit
Clonality	Recombinant Rabbit Monoclonal
Isotype	Rabbit IgG
Clone Name	RM447
Purity	Protein A purified from animal origin-free supernatant
UniProt	Q71U36
Applications	Western Blot : 1:500-1:1000
Limitations	This recombinant Delta 2-Alpha-Tubulin antibody is available for research use only.



Western blot analysis of human HeLa cell lysate and purified cow brain tubulin using Delta 2-Alpha-Tubulin antibody at a 1:1000 dilution. Image courtesy of Dr. Ryoma Ohi, University of Michigan, USA

Description

This antibody specifically reacts to dC2-alpha-Tubulin, a C-terminally trimmed version of alpha-tubulin that lacks a carboxy-terminal glutamyl-tyrosine group.

Application Notes

The stated application concentrations are suggested starting points. Titration of the recombinant Delta 2-Alpha-Tubulin antibody may be required due to differences in protocols and secondary/substrate sensitivity.

Immunogen

A peptide corresponding to dC2- α -Tubulin was used as the immunogen for the Delta 2- α -Tubulin antibody.

Storage

Store the recombinant Delta 2- α -Tubulin antibody at -20°C.