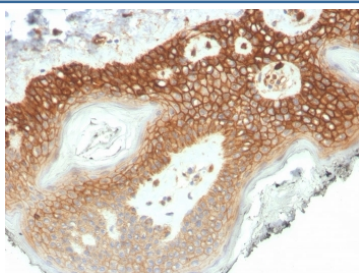


Delta 1 Catenin Antibody / CTNND1 / p120 Catenin [clone CTNND1/4501] (V9324)

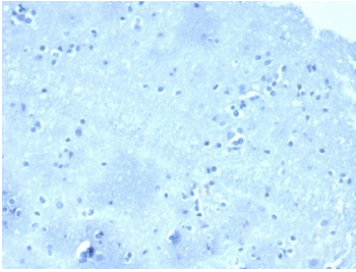
Catalog No.	Formulation	Size
V9324-100UG	0.2 mg/ml in 1X PBS with 0.1 mg/ml BSA (US sourced), 0.05% sodium azide	100 ug
V9324-20UG	0.2 mg/ml in 1X PBS with 0.1 mg/ml BSA (US sourced), 0.05% sodium azide	20 ug
V9324SAF-100UG	1 mg/ml in 1X PBS; BSA free, sodium azide free	100 ug

Bulk quote request

Availability	1-3 business days
Species Reactivity	Human
Format	Purified
Clonality	Monoclonal (mouse origin)
Isotype	Mouse IgG2b, kappa
Clone Name	CTNND1/4501
Purity	Protein A/G affinity
UniProt	O60716
Localization	Cell Surface, Cytoplasm
Applications	Immunohistochemistry (FFPE) : 2-4ug/ml
Limitations	This Delta 1 Catenin antibody is available for research use only.



IHC staining of FFPE human colon tissue with Delta 1 Catenin antibody (clone CTNND1/4501) at 2ug/ml in PBS for 30min RT. HIER: boil tissue sections in pH 9 10mM Tris with 1mM EDTA for 20 min and allow to cool before testing.



Negative tissue control: IHC analysis of formalin-fixed, paraffin-embedded human brain stained with CTNND1/4501 at 2ug/ml in PBS for 30min RT. HIER: boil tissue sections in pH 9 10mM Tris with 1mM EDTA for 20 min and allow to cool before testing.

Description

Alpha-catenin and beta-catenin bind to the intracellular domain of E-cadherin while p120 catenin (delta-1-catenin) binds E-cadherin at a juxta-membrane site. The complex stabilizes tight junctions. In the cell, delta-1-catenin localized to the E-cadherin/catenins cell adhesion complex, directly associates with cytoplasmic C-terminus of E-cadherin and may similarly interact with other cadherins.

Application Notes

Optimal dilution of the Delta 1 Catenin antibody should be determined by the researcher.

Immunogen

A portion of amino acids 138-276 was used as the immunogen for the Delta 1 Catenin antibody.

Storage

Aliquot the Delta 1 Catenin antibody and store frozen at -20oC or colder. Avoid repeated freeze-thaw cycles.