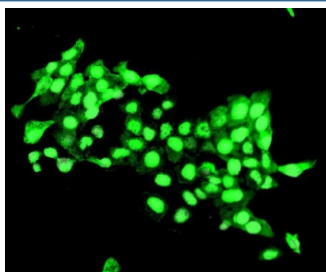


DELE Antibody / DELE1 / KIAA0141 (RQ6057)

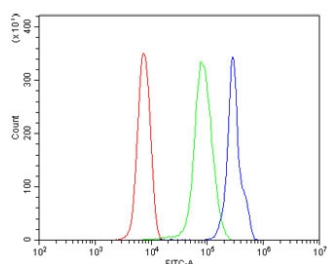
Catalog No.	Formulation	Size
RQ6057	0.5mg/ml if reconstituted with 0.2ml sterile DI water	100 ug

Bulk quote request

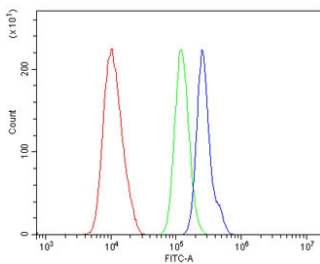
Availability	1-3 business days
Species Reactivity	Human
Format	Antigen affinity purified
Clonality	Polyclonal (rabbit origin)
Isotype	Rabbit IgG
Purity	Affinity purified
Buffer	Lyophilized from 1X PBS with 2% Trehalose and 0.025% sodium azide
UniProt	Q14154
Applications	Western Blot : 0.5-1ug/ml Immunofluorescence : 2-4ug/ml Flow Cytometry : 1-3ug/million cells Direct ELISA : 0.1-0.5ug/ml
Limitations	This DELE antibody is available for research use only.



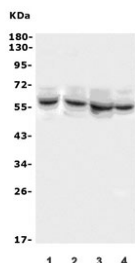
Immunofluorescent staining of FFPE human U-2 OS cells with DELE antibody. HIER: steam section in pH6 citrate buffer for 20 min.



Flow cytometry testing of human U937 cells with DELE antibody at 1ug/million cells (blocked with goat sera); Red=cells alone, Green=isotype control, Blue= KIAA0141 antibody.



Flow cytometry testing of human U-87 MG cells with DELE antibody at 1ug/million cells (blocked with goat sera); Red=cells alone, Green=isotype control, Blue= KIAA0141 antibody.



Western blot testing of human 1) Caco-2, 2) Jurkat, 3) HepG2 and 4) A549 cell lysate with DELE antibody. Predicted molecular weight ~56 kDa.

Description

DAP3-binding cell death enhancer 1 is a protein that in humans is encoded by the DELE1 gene. This gene is mapped to 5q31.3.

Application Notes

Optimal dilution of the DELE antibody should be determined by the researcher.

Immunogen

Recombinant human protein (amino acids E218-L430) was used as the immunogen for the DELE antibody.

Storage

After reconstitution, the DELE antibody can be stored for up to one month at 4oC. For long-term, aliquot and store at -20oC. Avoid repeated freezing and thawing.