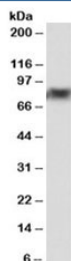


## DDX41 Antibody (R35236)

Catalog No.	Formulation	Size
R35236-100UG	0.5 mg/ml in 1X TBS, pH7.3, with 0.5% BSA (US sourced) and 0.02% sodium azide	100 ug

[Bulk quote request](#)

Availability	1-3 business days
Species Reactivity	Human
Predicted Reactivity	Cow, Dog, Mouse, Rat
Format	Antigen affinity purified
Host	Goat
Clonality	Polyclonal (goat origin)
Isotype	Goat Ig
Purity	Antigen affinity
Gene ID	51428
Applications	Western Blot : 0.5-2ug/ml ELISA (peptide) LOD : 1:128000
Limitations	This DDX41 antibody is available for research use only.



Western blot testing of bone marrow lysate with DDX41 antibody at 0.5ug/ml. Predicted molecular weight: ~70kDa, observed here at ~82kDa.

## Description

Additional name(s) for this target protein: DEAD (Asp-Glu-Ala-Asp) box polypeptide 41

## Application Notes

Optimal dilution of the DDX41 antibody should be determined by the researcher.

## **Immunogen**

Amino acids QEERTKAIEAFRE were used as the immunogen for this DDX41 antibody.

## **Storage**

Aliquot and store the DDX41 antibody at -20oC.