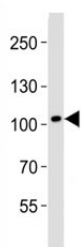


DDR1 Antibody / Discoidin domain-containing receptor 1 (F52621)

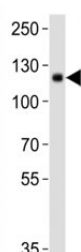
Catalog No.	Formulation	Size
F52621-0.4ML	In 1X PBS, pH 7.4, with 0.09% sodium azide	0.4 ml
F52621-0.08ML	In 1X PBS, pH 7.4, with 0.09% sodium azide	0.08 ml

[Bulk quote request](#)

Availability	1-3 business days
Species Reactivity	Human, Mouse
Predicted Reactivity	Rat
Format	Antigen affinity purified
Host	Rabbit
Clonality	Polyclonal (rabbit origin)
Isotype	Rabbit Ig
Purity	Antigen affinity
UniProt	Q03146
Applications	Western Blot : 1:500-1000
Limitations	This DDR1 antibody is available for research use only.



Western blot analysis of lysate from human brain tissue lysate using DDR1 antibody diluted at 1:1000.



Western blot analysis of lysate from mouse kidney tissue lysate using DDR1 antibody diluted at 1:1000. Predicted molecular weight: 100~125KD.

Description

Tyrosine kinase that functions as cell surface receptor for fibrillar collagen and regulates cell attachment to the extracellular matrix, remodeling of the extracellular matrix, cell migration, differentiation, survival and cell proliferation. Collagen binding triggers a signaling pathway that involves SRC and leads to the activation of MAP kinases. Regulates remodeling of the extracellular matrix by up-regulation of the matrix metalloproteinases MMP2, MMP7 and MMP9, and thereby facilitates cell migration and wound healing, but also tumor cell invasion. Promotes smooth muscle cell migration, and thereby contributes to arterial wound healing. Phosphorylates PTPN11 (By similarity). Required for normal blastocyst implantation during pregnancy, for normal mammary gland differentiation and normal lactation. Required for normal ear morphology and normal hearing.

Application Notes

Titration of the DDR1 antibody may be required due to differences in protocols and secondary/substrate sensitivity.

Immunogen

This DDR1 antibody was produced from a rabbit immunized with a KLH conjugated synthetic peptide between 396-430 amino acids from the central region of mouse Ddr1.

Storage

Aliquot the DDR1 antibody and store frozen at -20oC or colder. Avoid repeated freeze-thaw cycles.