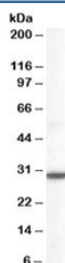


DDAH2 Antibody (R36068)

| Catalog No. | Formulation | Size |
|--------------|---|--------|
| R36068-100UG | 0.5 mg/ml in 1X TBS, pH7.3, with 0.5% BSA (US sourced) and 0.02% sodium azide | 100 ug |

[Bulk quote request](#)

| | |
|----------------------|--|
| Availability | 1-3 business days |
| Species Reactivity | Human, Mouse |
| Predicted Reactivity | Cow, Dog, Rat |
| Format | Antigen affinity purified |
| Host | Goat |
| Clonality | Polyclonal (goat origin) |
| Isotype | Goat Ig |
| Purity | Antigen affinity |
| Gene ID | 23564 |
| Applications | Western Blot : 0.1-0.3ug/ml ELISA (peptide) LOD : 1:16000 |
| Limitations | This DDAH2 antibody is available for research use only. |



Western blot testing of human lung lysate with DDAH2 antibody at 0.1ug/ml. Predicted molecular weight: ~29 kDa.

Description

Additional name(s) for this target protein: Dimethylarginine dimethylaminohydrolase 2

Application Notes

Optimal dilution of the DDAH2 antibody should be determined by the researcher.

Immunogen

Amino acids SSLCLVLSTRPHS were used as the immunogen for this DDAH2 antibody.

Storage

Aliquot and store the DDAH2 antibody at -20oC.