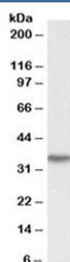


DDAH1 Antibody (R36136)

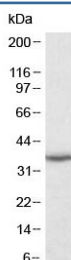
Catalog No.	Formulation	Size
R36136-100UG	0.5 mg/ml in 1X TBS, pH7.3, with 0.5% BSA (US sourced) and 0.02% sodium azide	100 ug

[Bulk quote request](#)

Availability	1-3 business days
Species Reactivity	Human
Predicted Reactivity	Cow
Format	Antigen affinity purified
Clonality	Polyclonal (goat origin)
Isotype	Goat Ig
Purity	Antigen affinity
Gene ID	23576
Applications	Western Blot : 0.03-0.1ug/ml ELISA (peptide) LOD : 1:2000
Limitations	This DDAH1 antibody is available for research use only.



Western blot testing of human kidney lysate with DDAH1 antibody at 0.03ug/ml.
Expected molecular weight: 31-38 kDa.



Western blot testing of human kidney lysate with DDAH1 antibody at 0.1ug/ml. Predicted molecular weight: ~31 kDa.

Description

Additional name(s) for this target protein: Dimethylarginine dimethylaminohydrolase 1

Application Notes

Optimal dilution of the DDAH1 antibody should be determined by the researcher.

Immunogen

Amino acids TCCSVLINKKVDS were used as the immunogen for this DDAH1 antibody.

Storage

Aliquot and store the DDAH1 antibody at -20oC.