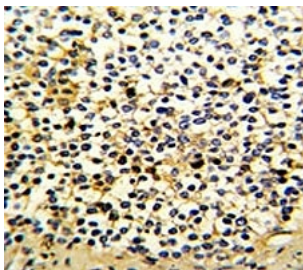


## DCXR Antibody (F50407)

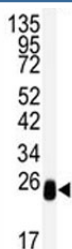
Catalog No.	Formulation	Size
F50407-0.4ML	In 1X PBS, pH 7.4, with 0.09% sodium azide	0.4 ml
F50407-0.08ML	In 1X PBS, pH 7.4, with 0.09% sodium azide	0.08 ml

[Bulk quote request](#)

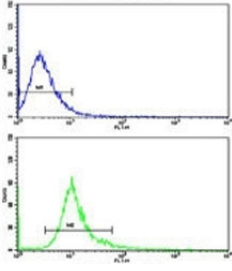
<b>Availability</b>	1-3 business days
<b>Species Reactivity</b>	Human, Mouse
<b>Format</b>	Purified
<b>Host</b>	Rabbit
<b>Clonality</b>	Polyclonal (rabbit origin)
<b>Isotype</b>	Rabbit Ig
<b>Purity</b>	Purified
<b>UniProt</b>	Q7Z4W1
<b>Applications</b>	Western Blot : 1:1000 IHC (Paraffin) : 1:50-1:100 Flow Cytometry : 1:10-1:50
<b>Limitations</b>	This DCXR antibody is available for research use only.



IHC analysis of FFPE human kidney carcinoma with DCXR antibody



Western blot analysis of DCXR antibody and mouse lung tissue lysate. Predicted molecular weight: ~26kDa.



Flow cytometric analysis of NCI-H292 cells using DCXR antibody (bottom histogram) compared to a negative control (top histogram). FITC-conjugated goat-anti-rabbit secondary Ab was used for the analysis.

## Description

DCXR is an enzyme that has both diacetyl reductase and L-xylulose reductase activities.

## Application Notes

Titration of the DCXR antibody may be required due to differences in protocols and secondary/substrate sensitivity.

## Immunogen

A portion of amino acids 79-106 from the human protein was used as the immunogen for this DCXR antibody.

## Storage

Aliquot the DCXR antibody and store frozen at -20oC or colder. Avoid repeated freeze-thaw cycles.