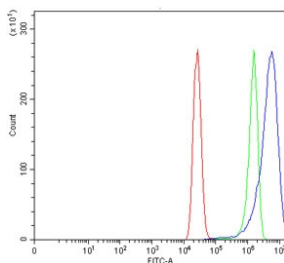


DCT Antibody / L-dopachrome tautomerase / TYRP2 / TRP2 (RQ6972)

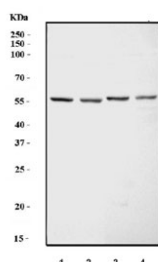
Catalog No.	Formulation	Size
RQ6972	0.5mg/ml if reconstituted with 0.2ml sterile DI water	100 ug

[Bulk quote request](#)

Availability	1-3 business days
Species Reactivity	Human, Mouse, Rat
Format	Antigen affinity purified
Host	Rabbit
Clonality	Polyclonal (rabbit origin)
Isotype	Rabbit IgG
Purity	Antigen affinity purified
Buffer	Lyophilized from 1X PBS with 2% Trehalose
UniProt	P40126
Applications	Western Blot : 0.5-1 ug/ml Flow Cytometry : 1-3ug/million cells Direct ELISA : 0.1-0.5ug/ml
Limitations	This DCT antibody is available for research use only.



Flow cytometry testing of human MCF7 cells with DCT antibody at 1ug/million cells (blocked with goat sera); Red=cells alone, Green=isotype control, Blue= DCT antibody.



Western blot testing of 1) rat testis, 2) C6, 3) mouse testis and 4) mouse RAW264.7 cell lysate with DCT antibody. Predicted molecular weight ~59 kDa.

Description

Dopachrome tautomerase (dopachrome delta-isomerase, tyrosine-related protein 2), also known as DCT, is a human gene. The TYR-related proteins, TRP1 and TRP2, are also specifically expressed in melanocytes, and they likewise contribute to the synthesis of melanin within the melanosomes. The TRPs, including TYR, all share a similar transmembrane region, contain two metal-binding regions and a cysteine-rich epidermal growth factor motif, and are localized in the melanosomal membrane. These proteins, however, have distinct catalytic activity, and they individually contribute to the biosynthesis of melanin biopolymers. The TRPs are believed to exist as a multi-enzyme complex, as these proteins form aggregates together, and the expression of TRP1 also helps stabilize TYR in melanocytes.

Application Notes

Optimal dilution of the DCT antibody should be determined by the researcher.

Immunogen

Recombinant human protein (amino acids Q24-A519) was used as the immunogen for the DCT antibody.

Storage

After reconstitution, the DCT antibody can be stored for up to one month at 4°C. For long-term, aliquot and store at -20°C. Avoid repeated freezing and thawing.