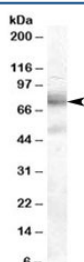


DCP1A Antibody (R35505)

Catalog No.	Formulation	Size
R35505-100UG	0.5 mg/ml in 1X TBS, pH7.3, with 0.5% BSA (US sourced) and 0.02% sodium azide	100 ug

[Bulk quote request](#)

Availability	1-3 business days
Species Reactivity	Human
Predicted Reactivity	Mouse, Rat
Format	Antigen affinity purified
Clonality	Polyclonal (goat origin)
Isotype	Goat Ig
Purity	Antigen affinity
Gene ID	55802
Applications	Western Blot : 1-3ug/ml ELISA (peptide) LOD : 1:4000
Limitations	This DCP1A antibody is available for research use only.



Western blot testing of A431 cell lysate with DCP1A antibody at 2ug/ml. Predicted molecular weight: ~63kDa, observed here at ~75kDa.

Description

Additional name(s) for this target protein: Decapping enzyme

Application Notes

Optimal dilution of the DCP1A antibody should be determined by the researcher.

Immunogen

Amino acids QVLTKNKDNHN were used as the immunogen for this DCP1A antibody.

Storage

Aliquot and store the DCP1A antibody at -20oC.