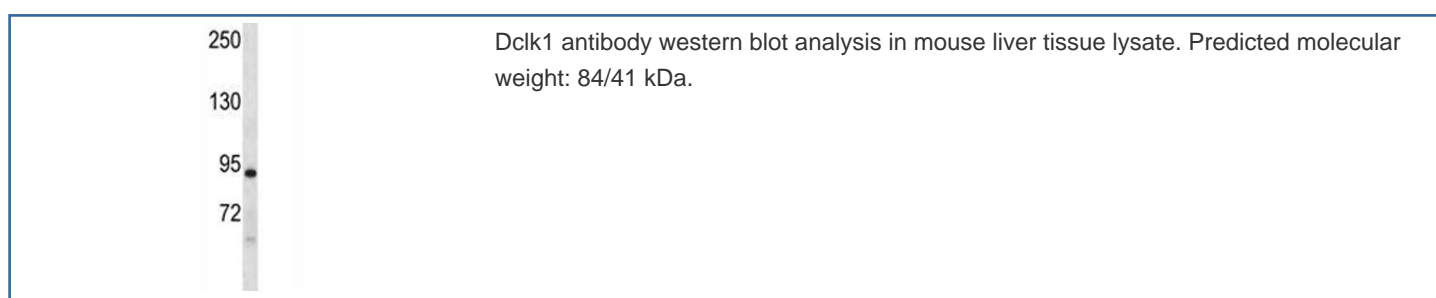


Dclk1 Antibody / Doublecortin-like kinase 1 / DCAMKL1 (F44334)

Catalog No.	Formulation	Size
F44334-0.4ML	In 1X PBS, pH 7.4, with 0.09% sodium azide	0.4 ml
F44334-0.08ML	In 1X PBS, pH 7.4, with 0.09% sodium azide	0.08 ml

[Bulk quote request](#)

Availability	1-3 business days
Species Reactivity	Mouse
Format	Antigen affinity purified
Clonality	Polyclonal (rabbit origin)
Isotype	Rabbit Ig
Purity	Antigen affinity
UniProt	Q9JLM8
Applications	Western Blot : 1:1000
Limitations	This Dclk1 antibody is available for research use only.



Description

This gene encodes a member of the protein kinase superfamily and the doublecortin family. The protein encoded by this gene contains two N-terminal doublecortin domains, which bind microtubules and regulate microtubule polymerization, a C-terminal serine/threonine protein kinase domain, which shows substantial homology to Ca²⁺/calmodulin-dependent protein kinase, and a serine/proline-rich domain in between the doublecortin and the protein kinase domains, which mediates multiple protein-protein interactions. The microtubule-polymerizing activity of the encoded protein is independent of its protein kinase activity. The encoded protein is involved in several different cellular processes, including neuronal migration, retrograde transport, neuronal apoptosis and neurogenesis. This gene is up-regulated by brain-derived neurotrophic factor and associated with memory and general cognitive abilities. Multiple transcript variants

generated by two alternative promoter usage and alternative splicing have been found, but the biological validity of some variants has not been determined. These variants encode different isoforms, which are differentially expressed and have different kinase activities.

Application Notes

Titration of the Dclk1 antibody may be required due to differences in protocols and secondary/substrate sensitivity.

Immunogen

A portion of amino acids 153-181 from the mouse protein was used as the immunogen for this Dclk1 antibody.

Storage

Aliquot the Dclk1 antibody and store frozen at -20oC or colder. Avoid repeated freeze-thaw cycles.