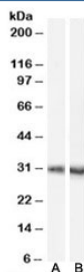


## Dcdc2a Antibody (R35120)

| Catalog No.  | Formulation   | Size   |
|--------------|---|--------|
| R35120-100UG | 0.5 mg/ml in 1X TBS, pH7.3, with 0.5% BSA (US sourced) and 0.02% sodium azide | 100 ug |

[Bulk quote request](#)

|                      |  |
|----------------------|--|
| Availability         | 1-3 business days  |
| Species Reactivity   | Human, Mouse   |
| Predicted Reactivity | Rat  |
| Format               | Antigen affinity purified                                  |
| Host                 | Goat   |
| Clonality            | Polyclonal (goat origin)                                   |
| Isotype              | Goat Ig  |
| Purity               | Antigen affinity   |
| Gene ID              | 51473  |
| Applications         | Western Blot : 0.1-1ug/ml<br>ELISA (peptide) LOD : 1:32000 |
| Limitations          | This Dcdc2a antibody is available for research use only.   |



Western blot testing of mouse brain lysate with A) Dcdc2a antibody, cat # R35120 (0.1ug/ml) and B) [DCDC2 antibody, cat # R33450](#) (0.1ug/ml). Predicted molecular weight (mouse): ~52/41kDa (isoforms 1/2), observed here at ~30kDa.

## Description

Additional name(s) for this target protein: Doublecortin domain containing 2a

## Application Notes

Optimal dilution of the Dcdc2a antibody should be determined by the researcher.

## Immunogen

Amino acids PQPLKRKGKKDSN were used as the immunogen for this Dcdc2a antibody.

## Storage

Aliquot and store the Dcdc2a antibody at -20oC.