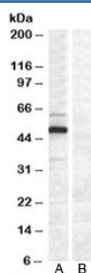


DCDC2 Antibody (R33450)

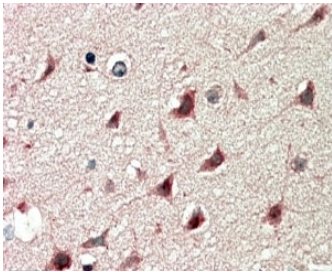
Catalog No.	Formulation	Size
R33450-100UG	0.5 mg/ml in 1X TBS, pH7.3, with 0.5% BSA (US sourced) and 0.02% sodium azide	100 ug

[Bulk quote request](#)

Availability	1-3 business days
Species Reactivity	Human, Mouse, Rat
Predicted Reactivity	Dog, Pig
Format	Antigen affinity purified
Host	Goat
Clonality	Polyclonal (goat origin)
Isotype	Goat Ig
Purity	Antigen affinity
UniProt	Q9UHG0
Gene ID	51473
Applications	Western Blot : 0.2-1ug/ml Immunohistochemistry (FFPE) : 5-10ug/ml ELISA (peptide) LOD : 1:4000
Limitations	This DCDC2 antibody is available for research use only.



Western blot testing of COS7 cell lysate transfected with full length human DCDC2 [A] and untransfected control COS7 cells [B] with DCDC2 antibody at 0.2ug/ml. Predicted molecular weight: ~53/26kDa (isoforms 1/2).



IHC staining of FFPE human cerebral cortex with DCDC2 antibody at 5ug/ml. HIER: steamed with pH6 citrate buffer, AP-staining.

Description

Additional name(s) for this target protein: Doublecortin domain containing 2

Application Notes

Optimal dilution of the DCDC2 antibody should be determined by the researcher.

Immunogen

Amino acids DGEKANKDAEQKED were used as the immunogen for this DCDC2 antibody.

Storage

Aliquot and store the DCDC2 antibody at -20oC.