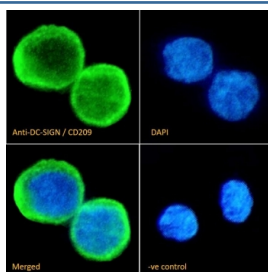


DC-SIGN Antibody (R34899)

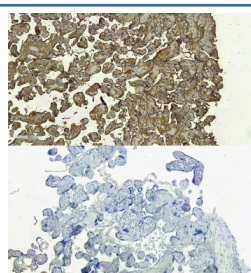
Catalog No.	Formulation	Size
R34899-100UG	0.5 mg/ml in 1X TBS, pH7.3, with 0.5% BSA (US sourced) and 0.02% sodium azide	100 ug

[Bulk quote request](#)

Availability	1-3 business days
Species Reactivity	Human
Format	Antigen affinity purified
Clonality	Polyclonal (goat origin)
Isotype	Goat Ig
Purity	Antigen affinity
Gene ID	30835
Applications	Western Blot : 1-3ug/ml Immunohistochemistry (FFPE) : 6ug/ml Immunofluorescence : 10ug/ml Flow Cytometry : 10ug/ml ELISA (peptide) LOD : 1:128000
Limitations	This DC-SIGN antibody is available for research use only.



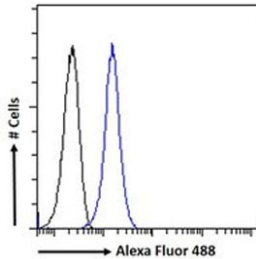
IF/ICC staining of fixed and permeabilized human ThP-1 cells with DC-SIGN antibody (green) at 10ug/ml and DAPI nuclear stain (blue).



IHC staining of FFPE human placental tissue with DC-SIGN antibody (top) and without DC-SIGN antibody (bottom, negative control) at 6ug/ml. Required HIER: steamed antigen retrieval with pH6 citrate buffer; HRP-staining.



Western blot testing of human A) K562 and B) ThP-1 cell lysate with DC-SIGN antibody.
Predicted molecular weight ~46 kDa.



FACS testing of fixed and permeabilized human ThP-1 cells with DC-SIGN antibody (blue) at 10ug/ml and naive goat Ig (black).

Description

Additional name(s) for this target protein: Dendritic cell-specific intracellular adhesion molecules (ICAM)-3 grabbing non-integrin; CD209

Application Notes

Optimal dilution of the DC-SIGN antibody should be determined by the researcher.

Immunogen

Amino acids NRGEPNNVGEED were used as the immunogen for this DC-SIGN antibody.

Storage

Aliquot and store the DC-SIGN antibody at -20oC.