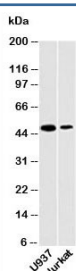


DC-SIGN Antibody (N1090)

Catalog No.	Formulation	Size
N1090-100UG	0.5 mg/ml in 1X PBS with 0.1 mg/ml BSA (US sourced), 0.05% sodium azide	100 ug
N1090-25UG	0.5 mg/ml in 1X PBS with 0.1 mg/ml BSA (US sourced), 0.05% sodium azide	25 ug

[Bulk quote request](#)

Species Reactivity	Human, Mouse
Format	Purified
Clonality	Polyclonal (rabbit origin)
Isotype	Rabbit IgG
Purity	Protein A purified antibody
Buffer	1X PBS, pH 7.4
Gene ID	30835
Applications	Western Blot : 2-5ug/ml
Limitations	This DC-SIGN antibody is available for research use only.



Western blot testing of human samples with DC-SIGN antibody at 2ug/ml. Predicted molecular weight ~46 kDa.

Description

DC-SIGN (Dendritic Cell-Specific Intercellular adhesion molecule-3-Grabbing Non-integrin) also known as CD209, is part of the Lectin family of proteins. DC-SIGN is part of the innate immune response via its modulation of Toll-like Receptors. It is present on the surface of macrophages and dendritic cells and binds mannose carbohydrates, a class of PAMPS found on bacteria, fungi and viruses. PAMP stimulated DC-SIGN activates the Raf kinases Raf-1 and B-Raf. Raf-1 phosphorylates Ser276 of NF-kB p65 which serves as a binding site for histone acetyltransferases CREB-binding protein (CBP) and p300. Acetylation of NF-kB p65 leads to enhanced and prolonged anti-inflammatory cytokine IL-10 production.

Application Notes

Provided assay concentrations are suggestions only, DC-SIGN antibody titration may be required for optimal results.

Immunogen

A recombinant protein fragment from human DC-SIGN was used as the immunogen for this antibody.

Storage

Aliquot the DC-SIGN antibody and store frozen at -20oC or colder. Avoid repeated freeze-thaw cycles.

Alternate Names

CD209 antibody

References (1)