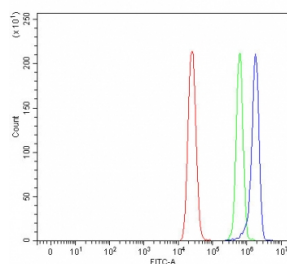


DBL Antibody / MCF2 (RQ7780)

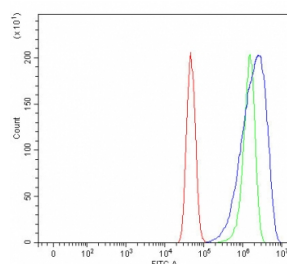
Catalog No.	Formulation	Size
RQ7780	0.5mg/ml if reconstituted with 0.2ml sterile DI water	100 ug

Bulk quote request

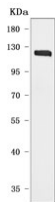
Availability	1-3 business days
Species Reactivity	Human
Format	Antigen affinity purified
Clonality	Polyclonal (rabbit origin)
Isotype	Rabbit IgG
Purity	Antigen affinity purified
Buffer	Lyophilized from 1X PBS with 2% Trehalose
UniProt	P10911
Applications	Western Blot : 0.5-1ug/ml Flow Cytometry : 1-3ug/million cells Direct ELISA : 0.1-0.5ug/ml
Limitations	This DBL antibody is available for research use only.



Flow cytometry testing of human MCF7 cells with DBL antibody at 1ug/million cells (blocked with goat sera); Red=cells alone, Green=isotype control, Blue= DBL antibody.



Flow cytometry testing of human U-251 cells with DBL antibody at 1ug/million cells (blocked with goat sera); Red=cells alone, Green=isotype control, Blue= DBL antibody.



Western blot testing of human SH-SY5Y cell lysate with DBL antibody. Predicted molecular weight: 96-116 kDa (multiple isoforms).

Description

The DBL proto-oncogene is a protein that in humans is encoded by the MCF2 gene. The oncogenic protein encoded by this gene is a guanine nucleotide exchange factor (GEF) that exerts control over some members of the Rho family of small GTPases. Several transcript variants encoding different isoforms have been found for this gene. These isoforms exhibit different expression patterns and varying levels of GEF activity.

Application Notes

Optimal dilution of the DBL antibody should be determined by the researcher.

Immunogen

E. coli-derived recombinant human protein (amino acids D42-Y925) was used as the immunogen for the DBL antibody.

Storage

After reconstitution, the DBL antibody can be stored for up to one month at 4°C. For long-term, aliquot and store at -20°C. Avoid repeated freezing and thawing.