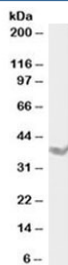


DAZL Antibody (R34115)

Catalog No.	Formulation	Size
R34115-100UG	0.5 mg/ml in 1X TBS, pH7.3, with 0.5% BSA (US sourced) and 0.02% sodium azide	100 ug

[Bulk quote request](#)

Availability	1-3 business days
Species Reactivity	Human, Mouse, Rat
Predicted Reactivity	Dog, Cow
Format	Antigen affinity purified
Host	Goat
Clonality	Polyclonal (goat origin)
Isotype	Goat Ig
Purity	Antigen affinity
Gene ID	1618
Applications	Western Blot : 0.1-1ug/ml ELISA (peptide) LOD : 1:32000
Limitations	This DAZL antibody is available for research use only.



DAZL Antibody Rat Testis WB. Western blot analysis of rat testis lysate using DAZL Antibody / Germ Cell Marker Antibody demonstrates a distinct immunoreactive band at approximately 32-35 kDa, consistent with expression of DAZL. DAZL is a conserved RNA-binding protein that plays a critical role in germline specification, germ cell differentiation, and reproductive development through regulation of mRNA translation in developing germ cells. Expression of DAZL is closely associated with spermatogenic cell populations and is widely utilized as a marker of germline lineage commitment and fertility-associated pathways. The observed band migrates near the predicted molecular weight of approximately 32 kDa and is consistent with endogenous DAZL expression in rat testicular tissue. Antibody concentration: 1 ug/ml. Predicted molecular weight: approximately 32 kDa. Observed molecular weight: approximately 32-35 kDa.

Description

DAZL Antibody detects DAZL (Deleted in Azoospermia Like), a highly conserved RNA-binding protein that plays a central role in germ cell development, germline maintenance, and reproductive biology. DAZL belongs to the DAZ family of germ

cell-associated proteins and functions as a key regulator of post-transcriptional gene expression in developing germ cells. Through its ability to bind specific mRNA targets and control their translation, DAZL promotes cellular pathways required for germ cell survival, proliferation, differentiation, and maturation. Because of its close association with germline populations, DAZL is widely recognized as an important marker of germ cell identity and reproductive development.

DAZL functions primarily by regulating the expression of proteins required for germline specification and developmental progression. Unlike transcription factors that directly regulate DNA-dependent gene expression, DAZL acts at the RNA level to influence protein production during critical stages of germ cell development. These activities contribute to the establishment of primordial germ cells, maintenance of germline populations, and formation of mature reproductive tissues. Proper DAZL expression is therefore essential for normal fertility and reproductive competence across vertebrate species.

Expression of DAZL is largely restricted to germ cells and reproductive tissues, making it a valuable marker for studies of gonadal development, spermatogenesis, oogenesis, and germline differentiation. DAZL is frequently detected in primordial germ cells, spermatogonia, developing oocytes, and other germ cell populations undergoing maturation. Researchers commonly utilize DAZL Antibody to investigate reproductive biology, germ cell lineage commitment, and mechanisms regulating germline development and maintenance.

Beyond reproductive biology, DAZL has become an important target in stem cell research and developmental biology. Germ cells share several molecular characteristics with stem cell populations, including the capacity for self-renewal and highly regulated differentiation. As a result, DAZL is frequently studied in the context of cellular fate determination, lineage specification, and developmental competence. Analysis of DAZL expression can provide valuable insight into the molecular pathways that govern transition from progenitor states to specialized germline cell populations.

Alterations in DAZL expression or function have been associated with infertility, impaired germ cell development, and reproductive disorders. DAZL has also been investigated in germ cell-derived tumors and other diseases involving dysregulated developmental pathways. Consequently, DAZL remains an important marker for fertility research, reproductive medicine, germline biology, and studies examining the molecular regulation of reproductive development.

DAZL Antibody is useful for researchers studying germ cell biology, germline specification, fertility, reproductive development, gonadal biology, stem cell regulation, primordial germ cells, spermatogenesis, oogenesis, and developmental biology. Applications may include immunohistochemistry, western blotting, immunofluorescence, flow cytometry, and other protein expression analyses when supported by validation data.

Learn more about DAZL expression, germ cell development, germline specification, fertility, and reproductive biology on our [DAZL Antibody / Germ Cell Marker Antibody](#) page.

Application Notes

Optimal dilution of the DAZL antibody should be determined by the researcher.

Immunogen

Amino acids GNGPQKKSVDK were used as the immunogen for this DAZL antibody.

Storage

Aliquot and store the DAZL antibody at -20°C.

