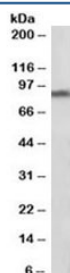


DAT Antibody (R35367)

Catalog No.	Formulation	Size
R35367-100UG	0.5 mg/ml in 1X TBS, pH7.3, with 0.5% BSA (US sourced) and 0.02% sodium azide	100 ug

[Bulk quote request](#)

Availability	1-3 business days
Species Reactivity	Human
Format	Antigen affinity purified
Host	Goat
Clonality	Polyclonal (goat origin)
Isotype	Goat Ig
Purity	Antigen affinity
Gene ID	6531
Applications	Western Blot : 1-3ug/ml ELISA (peptide) LOD : 1:4000
Limitations	This DAT antibody is available for research use only.



Western blot testing of human substantia nigra lysate with DAT antibody at 1ug/ml.
Predicted molecular weight: 68-80 kDa depending on level of glycosylation.

Description

Additional name(s) for this target protein: Solute carrier family 6 (neurotransmitter transporter, dopamine), member 3, sodium-dependent dopamine transporter, DA transporter; SLC6A3

Application Notes

Optimal dilution of the DAT antibody should be determined by the researcher.

Immunogen

Amino acids QLTSSSTLTNPRQSP were used as the immunogen for this DAT antibody.

Storage

Aliquot and store the DAT antibody at -20oC.