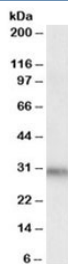


DAPP1 Antibody (R35833)

Catalog No.	Formulation	Size
R35833-100UG	0.5 mg/ml in 1X TBS, pH7.3, with 0.5% BSA (US sourced) and 0.02% sodium azide	100 ug

[Bulk quote request](#)

Availability	1-3 business days
Species Reactivity	Human
Format	Antigen affinity purified
Clonality	Polyclonal (goat origin)
Isotype	Goat Ig
Purity	Antigen affinity
Gene ID	27071
Applications	Western Blot : 0.5-1ug/ml ELISA (peptide) LOD : 1:4000
Limitations	This DAPP1 antibody is available for research use only.



Western blot testing of human kidney lysate with DAPP1 antibody at 0.5ug/ml. Predicted molecular weight: ~32kDa.

Description

Additional name(s) for this target protein: Dual adaptor of phosphotyrosine and 3-phosphoinositides

Application Notes

Optimal dilution of the DAPP1 antibody should be determined by the researcher.

Immunogen

Amino acids SALCISPEEKTDHK were used as the immunogen for this DAPP1 antibody.

Storage

Aliquot and store the DAPP1 antibody at -20oC.