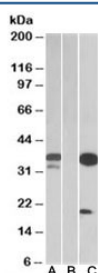


DAPP1 Antibody (R34528)

Catalog No.	Formulation	Size
R34528-100UG	0.5 mg/ml in 1X TBS, pH7.3, with 0.5% BSA (US sourced) and 0.02% sodium azide	100 ug

[Bulk quote request](#)

Availability	1-3 business days
Species Reactivity	Human
Predicted Reactivity	Cow, Dog
Format	Antigen affinity purified
Clonality	Polyclonal (goat origin)
Isotype	Goat Ig
Purity	Antigen affinity
Gene ID	27071
Applications	Western Blot : 0.1-1ug/ml ELISA (peptide) LOD : 1:8000
Limitations	This DAPP1 antibody is available for research use only.



Western blot testing of HEK293 lysate over expressing human DAPP1-FLAG with DAPP1 antibody (0.1ug/ml) in Lane A and anti-FLAG (1/3000) in lane C. Mock-transfected HEK293 probed with DAPP1 antibody (1ug/ml) in Lane B. Predicted molecular weight: ~32kDa.

Description

Additional name(s) for this target protein: Dual adaptor of phosphotyrosine and 3-phosphoinositides 1

Application Notes

Optimal dilution of the DAPP1 antibody should be determined by the researcher.

Immunogen

Amino acids KLSQIRKQLNQGE were used as the immunogen for this DAPP1 antibody.

Storage

Aliquot and store the DAPP1 antibody at -20oC.