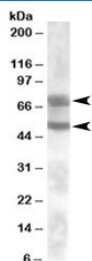


## DACH1 Antibody (R36017)

Catalog No.	Formulation	Size
R36017-100UG	0.5 mg/ml in 1X TBS, pH7.3, with 0.5% BSA (US sourced) and 0.02% sodium azide	100 ug

[Bulk quote request](#)

Availability	1-3 business days
Species Reactivity	Human
Predicted Reactivity	Dog, Mouse, Pig, Rat
Format	Antigen affinity purified
Host	Goat
Clonality	Polyclonal (goat origin)
Isotype	Goat Ig
Purity	Antigen affinity
Gene ID	1602
Applications	Western Blot : 0.1-0.3ug/ml (1) ELISA (peptide) LOD : 1:16000
Limitations	This DACH1 antibody is available for research use only.



Western blot testing of human kidney lysate with DACH1 antibody at 0.1ug/ml. Predicted molecular weight: ~73/57/52kDa (isoforms a/b/c).

### Description

Additional name(s) for this target protein: Dachshund homolog 1

### Application Notes

Optimal dilution of the DACH1 antibody should be determined by the researcher.

1. Isoforms a, b and c may be detected with this Ab.

## **Immunogen**

Amino acids SPVENTPQNNECK were used as the immunogen for this DACH1 antibody.

## **Storage**

Aliquot and store the DACH1 antibody at -20oC.