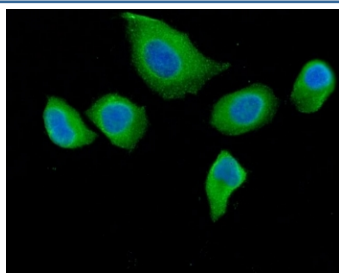


DAB2 Antibody / Disabled homolog 2 (RQ6971)

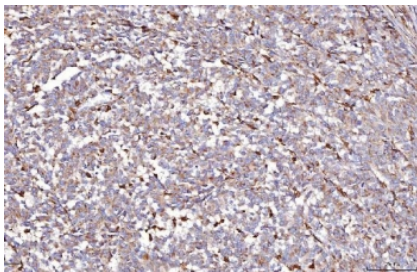
Catalog No.	Formulation	Size
RQ6971	0.5mg/ml if reconstituted with 0.2ml sterile DI water	100 ug

Bulk quote request

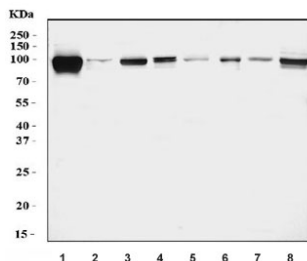
Availability	1-3 business days
Species Reactivity	Human, Mouse, Rat, Monkey
Format	Antigen affinity purified
Clonality	Polyclonal (rabbit origin)
Isotype	Rabbit IgG
Purity	Antigen affinity purified
Buffer	Lyophilized from 1X PBS with 2% Trehalose
UniProt	P98082
Localization	Cytoplasmic
Applications	Western Blot : 0.5-1 ug/ml Immunohistochemistry (FFPE) : 2-5ug/ml Immunofluorescence : 5ug/ml Flow Cytometry : 1-3ug/million cells Direct ELISA : 0.1-0.5ug/ml
Limitations	This DAB2 antibody is available for research use only.



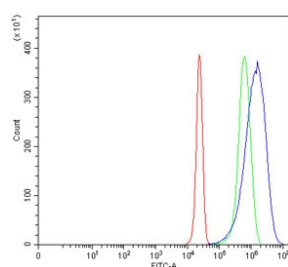
Immunofluorescent staining of FFPE human HeLa cells with DAB2 antibody (green) and DAPI nuclear stain (blue). HIER: steam section in pH6 citrate buffer for 20 min.



IHC staining of FFPE human melanoma tissue with DAB2 antibody. HIER: boil tissue sections in pH8 EDTA for 20 min and allow to cool before testing.



Western blot testing of 1) human HeLa, 2) human MCF7, 3) human Caco-2, 4) monkey COS-7, 5) rat kidney, 6) rat NRK, 7) mouse kidney and 8) mouse NIH 3T3 cell lysate with DAB2 antibody. Predicted molecular weight ~82 kDa but isoforms may be observed at approx. 69-96 kDa.



Flow cytometry testing of human HepG2 cells with DAB2 antibody at 1ug/million cells (blocked with goat sera); Red=cells alone, Green=isotype control, Blue= DAB2 antibody.

Description

Disabled homolog 2 is a protein that in humans is encoded by the DAB2 gene. This gene encodes a mitogen-responsive phosphoprotein. It is expressed in normal ovarian epithelial cells, but is down-regulated or absent from ovarian carcinoma cell lines, suggesting its role as a tumor suppressor. This protein binds to the SH3 domains of GRB2, an adaptor protein that couples tyrosine kinase receptors to SOS (a guanine nucleotide exchange factor for Ras), via its C-terminal proline-rich sequences, and may thus modulate growth factor/Ras pathways by competing with SOS for binding to GRB2. Alternatively spliced transcript variants encoding different isoforms have been found for this gene.

Application Notes

Optimal dilution of the DAB2 antibody should be determined by the researcher.

Immunogen

Recombinant human protein (amino acids H89-A770) was used as the immunogen for the DAB2 antibody.

Storage

After reconstitution, the DAB2 antibody can be stored for up to one month at 4°C. For long-term, aliquot and store at -20°C. Avoid repeated freezing and thawing.

