

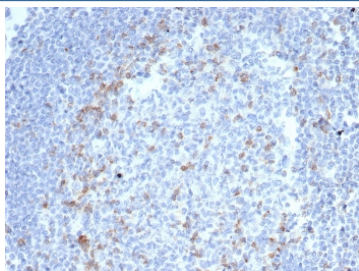
Cytotoxic T-lymphocyte protein 4 Antibody / CTLA4 / CD152 [clone CTLA4/6867R] (V4924)

Catalog No.	Formulation	Size
V4924-100UG	0.2 mg/ml in 1X PBS with 0.1 mg/ml BSA (US sourced), 0.05% sodium azide	100 ug
V4924-20UG	0.2 mg/ml in 1X PBS with 0.1 mg/ml BSA (US sourced), 0.05% sodium azide	20 ug
V4924SAF-100UG	1 mg/ml in 1X PBS; BSA free, sodium azide free	100 ug

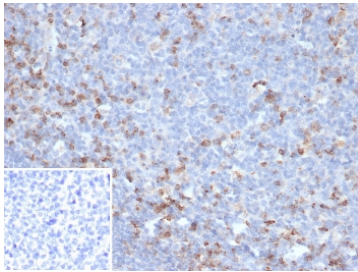
Recombinant **RABBIT MONOCLONAL**

[Bulk quote request](#)

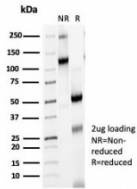
Availability	1-3 business days
Species Reactivity	Human
Format	Purified
Clonality	Recombinant Rabbit Monoclonal
Isotype	Rabbit IgG, kappa
Clone Name	CTLA4/6867R
Purity	Protein A/G affinity
UniProt	P16410
Localization	Cell surface, Secreted
Applications	Immunohistochemistry (FFPE) : 1-2ug/ml for 30 min at RT
Limitations	This Cytotoxic T-lymphocyte protein 4 antibody is available for research use only.



IHC staining of FFPE human tonsil tissue with Cytotoxic T-lymphocyte protein 4 antibody (clone CTLA4/6867R). HIER: boil tissue sections in pH 9 10mM Tris with 1mM EDTA for 20 min and allow to cool before testing.



IHC staining of FFPE human tonsil tissue with Cytotoxic T-lymphocyte protein 4 antibody (clone CTLA4/6867R). Inset: PBS used in place of primary Ab (secondary Ab negative control). HIER: boil tissue sections in pH 9 10mM Tris with 1mM EDTA for 20 min and allow to cool before testing.



SDS-PAGE analysis of purified, BSA-free Cytotoxic T-lymphocyte protein 4 antibody (clone CTLA4/6867R) as confirmation of integrity and purity.

Description

Cytotoxic T lymphocyte-associated antigen-4 (CTLA-4) is a member of the CD28 superfamily and is a negative regulator of T cell-mediated immune responses. CTLA-4 expression is induced on the surface of T cells after CD28 binding and activation, and is constitutively expressed on T-regulatory cells, acting as an immune checkpoint inhibitor, downregulating T cell activity. CTLA-4 primarily inactivates T-cell activity by competing with the CD28 costimulatory molecule. CD28 and CTLA-4 share the identical ligands of CD80 and CD86 on antigenpresenting cells; and thus CTLA-4 competes with CD28 function in T-cell survival, proliferation, and recruitment. In particular, CTLA-4 down-modulates CD4+ helper T-cell activity and enhances Treg immunosuppressive functions. CTLA-4 has been shown to play a role in human diseases. CTLA-4 acts as a physiological brake on the activated immune system in order to maintain immune homeostasis. Several suppressive mechanisms for T-cell functions have been attributed to CTLA-4.

Application Notes

Optimal dilution of the Cytotoxic T-lymphocyte protein 4 antibody should be determined by the researcher.

Immunogen

A recombinant fragment of human protein was used as the immunogen for the Cytotoxic T-lymphocyte protein 4 antibody.

Storage

Aliquot the Cytotoxic T-lymphocyte protein 4 antibody and store frozen at -20oC or colder. Avoid repeated freeze-thaw cycles.