

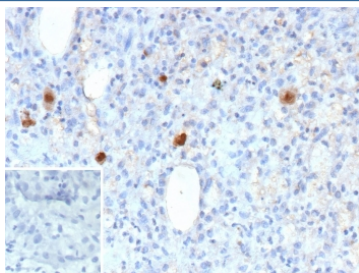
Cytomegalovirus Antibody / CMV-p65 [clone rCMV/9827] (V5835)

Catalog No.	Formulation	Size
V5835-100UG	0.2 mg/ml in 1X PBS with 0.1 mg/ml BSA (US sourced), 0.05% sodium azide	100 ug
V5835-20UG	0.2 mg/ml in 1X PBS with 0.1 mg/ml BSA (US sourced), 0.05% sodium azide	20 ug
V5835SAF-100UG	1 mg/ml in 1X PBS; BSA free, sodium azide free	100 ug

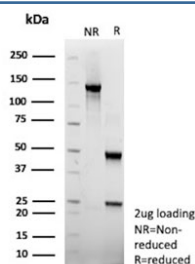
Recombinant **MOUSE MONOCLONAL**

[Bulk quote request](#)

Availability	1-3 business days
Species Reactivity	Cytomegalovirus
Format	Purified
Clonality	Recombinant Mouse Monoclonal
Isotype	Mouse IgG2b, kappa
Clone Name	rCMV/9827
Purity	Protein G affinity
UniProt	P06725
Localization	Host cytoplasm, Host nucleus
Applications	ELISA : Immunohistochemistry (FFPE) : 1-2ug/ml
Limitations	This Cytomegalovirus antibody is available for research use only.



IHC staining of FFPE human CMV-infected tissue with Cytomegalovirus antibody (clone rCMV/9827). Inset: PBS used in place of primary Ab (secondary Ab negative control).
HIER: boil tissue sections in pH 9 10mM Tris with 1mM EDTA for 20 min and allow to cool before testing.



SDS-PAGE analysis of purified, BSA-free Cytomegalovirus antibody (clone rCMV/9827) as confirmation of integrity and purity.

Description

Ten to forty percent of the patients with acquired immunodeficiency syndrome (AIDS) develop cytomegalovirus (CMV) infections. In some patients with AIDS, CMV is detected in the bronchoalveolar lavage fluid (BALF), urine, and other specimens, even when there are no symptoms of CMV disease. An indicator of active CMV infection is needed to facilitate the diagnosis of CMV disease in patients with AIDS or HIV infection. CMV p65 antigen was detected in the leukocytes of both the peripheral blood and BALF during the early phase of CMV disease.

Application Notes

Optimal dilution of the Cytomegalovirus antibody should be determined by the researcher.

Immunogen

Recombinant CMV-p65 protein was used as the immunogen for the was used as the immunogen for the Cytomegalovirus antibody.

Storage

Aliquot the Cytomegalovirus antibody and store frozen at -20oC or colder. Avoid repeated freeze-thaw cycles.