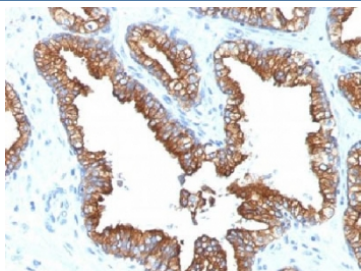


Cytokeratin 8/18 Antibody [clone KRT8.18/1346] (V3317)

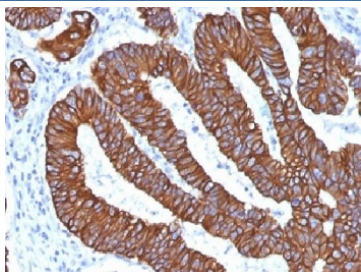
Catalog No.	Formulation	Size
V3317-100UG	0.2 mg/ml in 1X PBS with 0.1 mg/ml BSA (US sourced) and 0.05% sodium azide	100 ug
V3317-20UG	0.2 mg/ml in 1X PBS with 0.1 mg/ml BSA (US sourced) and 0.05% sodium azide	20 ug
V3317SAF-100UG	1 mg/ml in 1X PBS; BSA free, sodium azide free	100 ug

[Bulk quote request](#)

Availability	1-3 business days
Species Reactivity	Human
Format	Purified
Host	Mouse
Clonality	Monoclonal (mouse origin)
Isotype	Mouse IgG1, kappa
Clone Name	KRT8.18/1346
Purity	Protein G affinity chromatography
UniProt	P05787, P05783
Localization	Cytoplasmic
Applications	Immunohistochemistry (FFPE) : 0.1-0.2ug/ml for 30 min at RT
Limitations	This Cytokeratin 8/18 antibody is available for research use only.



IHC analysis of FFPE human prostate carcinoma with Cytokeratin 8/18 antibody (clone KRT8.18/1346). Required HIER: boil tissue sections in pH 9 10mM Tris with 1mM EDTA for 10-20 min.



IHC analysis of FFPE human colon carcinoma with Cytokeratin 8/18 antibody (clone KRT8.18/1346). Required HIER: boil tissue sections in pH 9 10mM Tris with 1mM EDTA for 10-20 min.

Description

Cytokeratin 8 (CK8) belongs to the type II (or B or basic) subfamily of high molecular weight cytokeratins and exists in combination with cytokeratin 18 (CK18). This mAb recognizes all simple epithelia including glandular epithelium, for example thyroid, female breast, gastrointestinal tract, respiratory tract, and urogenital tract including transitional epithelium. All adenocarcinomas and most squamous carcinomas are positive but keratinizing squamous carcinomas are usually negative. This antibody is useful in demonstrating the presence of Paget cells; there is very little keratin 18 in the normal epidermis so only Paget cells are stained.

Application Notes

Optimal dilution of the Cytokeratin 8/18 antibody should be determined by the researcher.

Immunogen

A cytoskeleton preparation from HeLa cells was used as the immunogen for the Cytokeratin 8/18 antibody.

Storage

Store the Cytokeratin 8/18 antibody at 2-8°C (with azide) or aliquot and store at -20°C or colder (without azide).