

Cytokeratin 8/18 Antibody Cocktail [clone C-43 + DC10] (V3114)

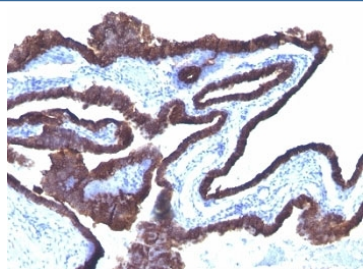
Catalog No.	Formulation	Size
V3114-100UG	0.2 mg/ml in 1X PBS with 0.1 mg/ml BSA (US sourced) and 0.05% sodium azide	100 ug
V3114-20UG	0.2 mg/ml in 1X PBS with 0.1 mg/ml BSA (US sourced) and 0.05% sodium azide	20 ug
V3114SAF-100UG	1 mg/ml in 1X PBS; BSA free, sodium azide free	100 ug
V3114IHC-7ML	Prediluted in 1X PBS with 0.1 mg/ml BSA (US sourced) and 0.05% sodium azide; *For IHC use only*	7 ml



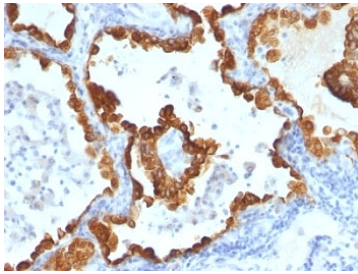
Citations (1)

[Bulk quote request](#)

Availability	1-3 business days
Species Reactivity	Human
Format	Purified
Clonality	Monoclonal (mouse origin)
Isotype	Mouse IgG1, kappa
Clone Name	C-43 + DC10
Purity	Protein G affinity chromatography
UniProt	P05787, P05783
Localization	Cytoplasmic
Applications	Immunohistochemistry (FFPE) : 1-2ug/ml for 30 min at RT
Limitations	This Cytokeratin 8/18 antibody cocktail is available for research use only.



IHC: Formalin-fixed, paraffin-embedded human ovarian cancer stained with Cytokeratin 8/18 antibody (C-43 + DC10).



IHC: Formalin-fixed, paraffin-embedded human lung carcinoma stained with Cytokeratin 8/18 antibody (C-43 + DC10).

Description

Cytokeratin 8 (CK8) belongs to the type II (or B or basic) subfamily of high molecular weight cytokeratins and exists in combination with cytokeratin 18 (CK18). This mAb cocktail recognizes all simple epithelia including glandular epithelium, for example thyroid, female breast, gastrointestinal tract, respiratory tract, and urogenital tract including transitional epithelium. All adenocarcinomas and most squamous carcinomas are positive but keratinizing squamous carcinomas are usually negative. This antibody is useful in demonstrating the presence of Paget cells; there is very little keratin 18 in the normal epidermis so only Paget cells are stained. Immunohistochemical staining with this mAb is indistinguishable from that obtained with monoclonal antibody 5D3.

Application Notes

Optimal dilution of the Cytokeratin 8/18 antibody cocktail should be determined by the researcher.

1. Staining of formalin-fixed tissues requires boiling tissue sections in pH 9 10mM Tris with 1mM EDTA for 10-20 min followed by cooling at RT for 20 min.
2. The prediluted format is supplied in a dropper bottle and is optimized for use in IHC. After epitope retrieval step (if required), drip mAb solution onto the tissue section and incubate at RT for 30 min.

Immunogen

A Keratin preparation from a human carcinoma (C-43) and PMC-42 human breast carcinoma cells (DC10) were used as the immunogen for the Cytokeratin 8/18 antibody cocktail.

Storage

Store the Cytokeratin 8/18 antibody cocktail at 2-8oC (with azide) or aliquot and store at -20oC or colder (without azide).