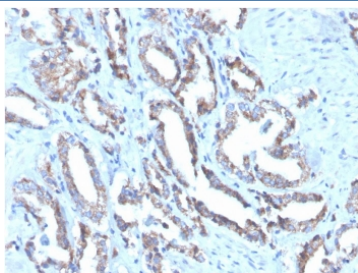


## Cytokeratin 7 Antibody / Biotin conjugate [clone OV-TL12/30] (V2654BTN)

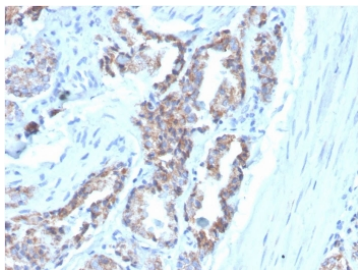
| Catalog No. | Formulation   | Size   |
|-------------|---|--------|
| V2654BTN    | 0.1 mg/ml with 0.1 mg/ml BSA (US sourced), 0.05% sodium azide | 500 ul |

**Bulk quote request**

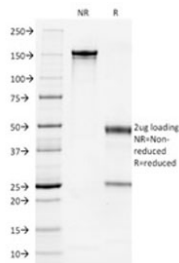
|                           |   |
|---------------------------|---|
| <b>Availability</b>       | 1-3 business days   |
| <b>Species Reactivity</b> | Human   |
| <b>Format</b>             | Biotin Conjugate  |
| <b>Host</b>               | Mouse   |
| <b>Clonality</b>          | Monoclonal (mouse origin)   |
| <b>Isotype</b>            | Mouse IgG1, kappa   |
| <b>Clone Name</b>         | OV-TL12/30  |
| <b>Purity</b>             | Protein G affinity chromatography   |
| <b>UniProt</b>            | P08729  |
| <b>Localization</b>       | Cytoplasmic   |
| <b>Applications</b>       | Flow Cytometry : 5ul per test per one million cells or 5ul per 100ul of whole blood<br>Immunofluorescence : 2-4ug/ml<br>Western Blot : 2-4ug/ml<br>Immunohistochemistry (FFPE) : 2-4ug/ml at RT |
| <b>Limitations</b>        | This Cytokeratin 7 antibody is available for research use only.   |



IHC staining of FFPE human prostate carcinoma with Cytokeratin 7 antibody (clone OV-TL12/30). HIER: boil tissue sections in pH 9 10mM Tris with 1mM EDTA for 20 min and allow to cool before testing.



IHC staining of FFPE human prostate carcinoma with Cytokeratin 7 antibody (clone OV-TL12/30). HIER: boil tissue sections in pH 9 10mM Tris with 1mM EDTA for 20 min and allow to cool before testing.



SDS-PAGE analysis of purified, BSA-free Cytokeratin 7 antibody (clone OV-TL12/30) as confirmation of integrity and purity.

## Description

It recognizes an intermediate filament protein (IFP) of 55kDa, which is identified as cytokeratin 7. This MAb is highly specific to cytokeratin 7 and shows no cross-reaction with other IFPs. Cytokeratin 7 is a basic cytokeratin, which is found in most glandular and transitional epithelia but not in the stratified squamous epithelia. Keratin 7 is expressed in the epithelial cells of ovary, lung, and breast but not of colon, prostate, or gastrointestinal tract. This MAb is highly useful in distinguishing ovarian carcinomas (keratin 7+) from colon carcinomas (keratin 7-).

## Application Notes

Optimal dilution of the Cytokeratin 7 antibody should be determined by the researcher.

## Immunogen

The ovarian carcinoma cell line OTN 11 was used as the immunogen for the Cytokeratin 7 antibody.

## Storage

Store the Cytokeratin 7 antibody at 2-8oC (up to one month) or aliquot and store at -20oC (longer term).