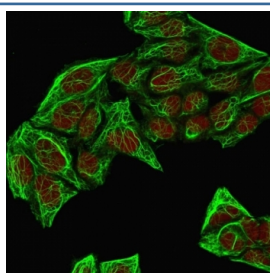


Cytokeratin 7 Antibody Cocktail [clone KRT7/760 + OV-TL12/30] (V2660)

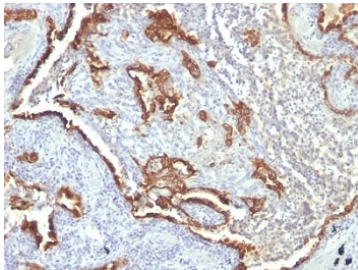
Catalog No.	Formulation	Size
V2660-100UG	0.2 mg/ml in 1X PBS with 0.1 mg/ml BSA (US sourced) and 0.05% sodium azide	100 ug
V2660-20UG	0.2 mg/ml in 1X PBS with 0.1 mg/ml BSA (US sourced) and 0.05% sodium azide	20 ug
V2660SAF-100UG	1 mg/ml in 1X PBS; BSA free, sodium azide free	100 ug
V2660IHC-7ML	Prediluted in 1X PBS with 0.1 mg/ml BSA (US sourced) and 0.05% sodium azide; *For IHC use only*	7 ml

[Bulk quote request](#)

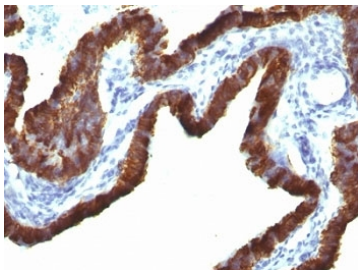
Availability	1-3 business days
Species Reactivity	Human, Rat
Format	Purified
Clonality	Monoclonal (mouse origin)
Isotype	Mouse IgG1, kappa
Clone Name	KRT7/760 + OV-TL12/30
Purity	Protein G affinity chromatography
UniProt	P08729
Localization	Cytoplasmic
Applications	Flow Cytometry : 0.5-1ug/10 ⁶ cells Immunofluorescence : 0.5-1ug/ml Immunohistochemistry (FFPE) : 1-2ug/ml for 30 min at RT
Limitations	This Cytokeratin 7 antibody cocktail is available for research use only.



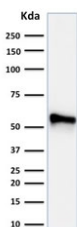
Immunofluorescent staining of methanol-fixed human HeLa cells with Cytokeratin 7 antibody cocktail (green, clones KRT7/760 + OV-TL12/30) and Reddot nuclear counterstain (red).



IHC: Formalin-fixed, paraffin-embedded human lung carcinoma stained with Cytokeratin 7 antibody (KRT7/760 + OV-TL12/30)



IHC: Formalin-fixed, paraffin-embedded human ovarian carcinoma stained with Cytokeratin 7 antibody (KRT7/760 + OV-TL12/30).



Western blot testing of human HeLa cell lysate with Cytokeratin 7 antibody cocktail (clones KRT7/760 + OV-TL12/30).

Description

It recognizes an intermediate filament protein (IFP) of 55kDa, which is identified as cytokeratin 7. This mAb is highly specific to cytokeratin 7 and shows no cross-reaction with other IFPs. Cytokeratin 7 is a basic cytokeratin, which is found in most glandular and transitional epithelia but not in the stratified squamous epithelia. Keratin 7 is expressed in the epithelial cells of ovary, lung, and breast but not of colon, prostate, or gastrointestinal tract. This mAb is highly useful in distinguishing ovarian carcinomas (keratin 7+) from colon carcinomas (keratin 7-).

Application Notes

Optimal dilution of the Cytokeratin 7 antibody cocktail should be determined by the researcher.

1. Staining of formalin-fixed tissues requires boiling tissue sections in 10mM Citrate buffer, pH 6.0, for 10-20 min followed by cooling at RT for 20 min
2. The prediluted format is supplied in a dropper bottle and is optimized for use in IHC. After epitope retrieval step (if required), drip mAb solution onto the tissue section and incubate at RT for 30 min.

Immunogen

Recombinant full-length human KRT7 protein (KRT7/760) and OTN 11 cells (OV-TL12/30) were used as the immunogen for the Cytokeratin 7 antibody cocktail.

Storage

Store the Cytokeratin 7 antibody cocktail at 2-8°C (with azide) or aliquot and store at -20°C or colder (without azide).

