

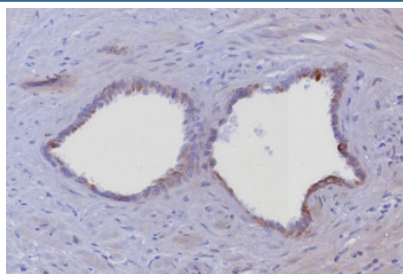
Cytokeratin 6 Antibody [clone KRT6/8198R] (V4288)

Catalog No.	Formulation	Size
V4288-100UG	0.2 mg/ml in 1X PBS with 0.1 mg/ml BSA (US sourced), 0.05% sodium azide	100 ug
V4288-20UG	0.2 mg/ml in 1X PBS with 0.1 mg/ml BSA (US sourced), 0.05% sodium azide	20 ug
V4288SAF-100UG	1 mg/ml in 1X PBS; BSA free, sodium azide free	100 ug

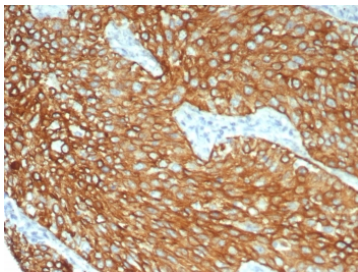
Recombinant **RABBIT MONOCLONAL**

[Bulk quote request](#)

Availability	1-3 business days
Species Reactivity	Human
Format	Purified
Host	Rabbit
Clonality	Recombinant Rabbit Monoclonal
Isotype	Rabbit IgG, kappa
Clone Name	KRT6/8198R
Purity	Protein A/G affinity
UniProt	P02538
Localization	Cytoplasm
Applications	Immunohistochemistry (FFPE) : 1-2ug/ml
Limitations	This Cytokeratin 6 antibody is available for research use only.



IHC staining of FFPE human prostate tissue with Cytokeratin 6 antibody (clone KRT6/8198R). HIER: boil tissue sections in pH 9 10mM Tris with 1mM EDTA for 20 min and allow to cool before testing.



IHC staining of FFPE human lung tissue with Cytokeratin 6 antibody (clone KRT6/8198R). HIER: boil tissue sections in pH 9 10mM Tris with 1mM EDTA for 20 min and allow to cool before testing.

Description

Cytokeratin 6 is an epidermis-specific type I keratin involved in wound healing. Involved in the activation of follicular keratinocytes after wounding, while it does not play a major role in keratinocyte proliferation or migration. This protein always paired with the type-I keratin K16. Cytokeratin 6 have been identified in epidermis only in samples from plantar glabrous skin while in hairy skin this keratin appeared to be absent in interfollicular epidermis but were clearly present in hair follicle outer root sheath, and this protein also consistently expressed in non-keratinizing stratified squamous epithelia. Among tumors, cytokeratin 6 is typically and strongly expressed in squamous cell carcinomas of different sites, preferentially in inner, maturing layers of the tumor cell nests. Cytokeratin 6 is always used with cytokeratin 5 and is a useful aid for classification of epithelioid mesotheliomas.

Application Notes

Optimal dilution of the Cytokeratin 6 antibody should be determined by the researcher.

Immunogen

A recombinant partial protein (within amino acids 1-200) from the human protein was used as the immunogen for the Cytokeratin 6 antibody.

Storage

Aliquot the Cytokeratin 6 antibody and store frozen at -20oC or colder. Avoid repeated freeze-thaw cycles.