

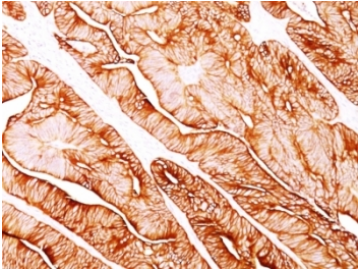
Cytokeratin 5/8 Antibody [clone C-50] (V3059)

Catalog No.	Formulation	Size
V3059-100UG	0.2 mg/ml in 1X PBS with 0.1 mg/ml BSA (US sourced) and 0.05% sodium azide	100 ug
V3059-20UG	0.2 mg/ml in 1X PBS with 0.1 mg/ml BSA (US sourced) and 0.05% sodium azide	20 ug
V3059SAF-100UG	1 mg/ml in 1X PBS; BSA free, sodium azide free	100 ug
V3059IHC-7ML	Prediluted in 1X PBS with 0.1 mg/ml BSA (US sourced) and 0.05% sodium azide; *For IHC use only*	7 ml

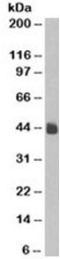
 [Citations \(2\)](#)

[Bulk quote request](#)

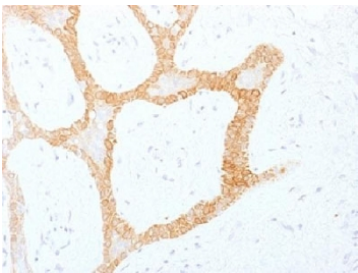
Availability	1-3 business days
Species Reactivity	Human, Mouse, Rat
Format	Purified
Host	Mouse
Clonality	Monoclonal (mouse origin)
Isotype	Mouse IgG1, kappa
Clone Name	C-50
Purity	Protein G affinity chromatography
UniProt	P13647, P05787
Localization	Cytoplasmic
Applications	Flow Cytometry : 0.5-1ug/10 ⁶ cells Immunofluorescence : 0.5-1ug/ml Western Blot : 0.5-1ug/ml Immunohistochemistry (FFPE) : 0.5-1ug/ml for 30 min at RT
Limitations	This Cytokeratin 5/8 antibody is available for research use only.



IHC analysis of formalin-fixed, paraffin-embedded human colon carcinoma stained with Cytokeratin 5/8 antibody (clone C-50). Required HIER: digest sections with Trypsin at 1mg/ml, 15 min, at RT.



Western blot testing of HeLa cell lysate and Cytokeratin 5/8 antibody (clone C-50). Predicted molecular weight: 52-58kDa but observed here at ~43kDa.



IHC analysis of formalin-fixed, paraffin-embedded human colon carcinoma stained with Cytokeratin 5/8 antibody (clone C-50). Required HIER: digest sections with Trypsin at 1mg/ml, 15 min, at RT.

Description

It reacts with keratin 5 (58kDa) and keratin 8 (52.5kDa). Simple epithelia express cytokeratin 8 in combination with 18. On the other hand, basal cells of stratified epithelia express cytokeratin 5 paired with 14. This antibody therefore, reacts with a wide range of epithelia and their carcinomas.

Application Notes

Optimal dilution of the Cytokeratin 5/8 antibody should be determined by the researcher.

1. The prediluted format is supplied in a dropper bottle and is optimized for use in IHC. After epitope retrieval step (if required), drip mAb solution onto the tissue section and incubate at RT for 30 min.

Immunogen

A cytoskeletal preparation from HeLa cells was used as the immunogen for the Cytokeratin 5/8 antibody.

Storage

Store the Cytokeratin 5/8 antibody at 2-8°C (with azide) or aliquot and store at -20°C or colder (without azide).

