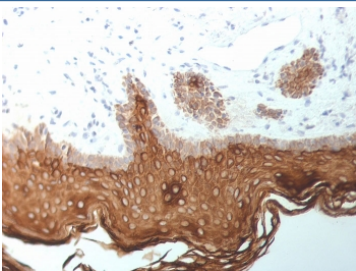


Cytokeratin 5/6/18 Antibody [clone SPM267] (V8319)

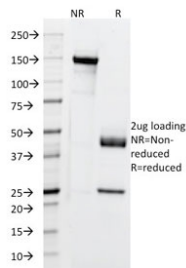
Catalog No.	Formulation	Size
V8319-100UG	0.2 mg/ml in 1X PBS with 0.1 mg/ml BSA (US sourced) and 0.05% sodium azide	100 ug
V8319-20UG	0.2 mg/ml in 1X PBS with 0.1 mg/ml BSA (US sourced) and 0.05% sodium azide	20 ug
V8319SAF-100UG	1 mg/ml in 1X PBS; BSA free, sodium azide free	100 ug

Bulk quote request

Availability	1-3 business days
Species Reactivity	Human
Format	Purified
Host	Mouse
Clonality	Monoclonal (mouse origin)
Isotype	Mouse IgG1, kappa
Clone Name	SPM267
Purity	Protein G affinity chromatography
Localization	Cytoplasmic
Applications	Immunohistochemistry (FFPE) : 1-2ug/ml
Limitations	This Cytokeratin 5/6/18 antibody is available for research use only.



IHC staining of FFPE human skin with Cytokeratin 5/6/18 antibody (clone SPM267).
HIER: boil tissue sections in pH 9 10mM Tris with 1mM EDTA for 10-20 min and allow to cool before testing.



SDS-PAGE analysis of purified, BSA-free Cytokeratin 5/6/18 antibody (clone SPM267) as confirmation of integrity and purity.

Description

It recognizes polypeptides of 58kDa, 56kDa, and 45kDa, identified as cytokeratin 5, 6, and 18 respectively. It shows no reaction with keratin 1, 8, or 19. This MAb shows a broad pattern of reactivity with epithelial tissues, from simple glandular epithelia to stratified squamous epithelia. Epithelial cells are labeled whether they are ectodermal, mesodermal, or endodermal in origin. This MAb is useful in detecting cells of epithelial origin in mixed tumors, in effusions, in bone marrow samples, or in tissue culture cells.

Application Notes

Optimal dilution of the Cytokeratin 5/6/18 antibody should be determined by the researcher.

Immunogen

The detergent-insoluble fraction of psoriatic human epidermis was used as the immunogen for the Cytokeratin 5/6/18 antibody.

Storage

Store the Cytokeratin 5/6/18 antibody at 2-8oC (with azide) or aliquot and store at -20oC or colder (without azide).