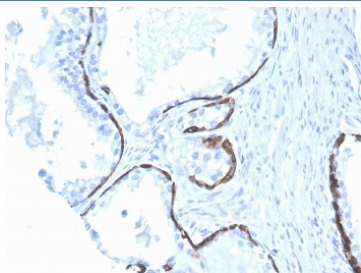


## Cytokeratin 5/6 Antibody [clone KRT5.6/4866] (V8764)

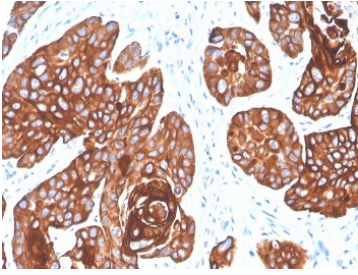
Catalog No.	Formulation	Size
V8764-100UG	0.2 mg/ml in 1X PBS with 0.1 mg/ml BSA (US sourced) and 0.05% sodium azide	100 ug
V8764-20UG	0.2 mg/ml in 1X PBS with 0.1 mg/ml BSA (US sourced) and 0.05% sodium azide	20 ug
V8764SAF-100UG	1 mg/ml in 1X PBS; BSA free, sodium azide free	100 ug

[Bulk quote request](#)

<b>Availability</b>	1-3 business days
<b>Species Reactivity</b>	Human
<b>Format</b>	Purified
<b>Host</b>	Mouse
<b>Clonality</b>	Monoclonal (mouse origin)
<b>Isotype</b>	Mouse IgG1, kappa
<b>Clone Name</b>	KRT5.6/4866
<b>Purity</b>	Protein G affinity chromatography
<b>UniProt</b>	P13647; P02538
<b>Localization</b>	Cytoplasmic
<b>Applications</b>	Immunohistochemistry (FFPE) : 1-2ug/ml for 30 minutes at RT
<b>Limitations</b>	This Cytokeratin 5/6 antibody is available for research use only.



IHC staining of FFPE human prostate with Cytokeratin 5/6 antibody (clone KRT5.6/4866). HIER: boil tissue sections in pH 9 10mM Tris with 1mM EDTA for 20 min and allow to cool before testing.



IHC staining of FFPE human squamous cell carcinoma with Cytokeratin 5/6 antibody (clone KRT5.6/4866). HIER: boil tissue sections in pH 9 10mM Tris with 1mM EDTA for 20 min and allow to cool before testing.

## Description

It recognizes polypeptides of 58kDa and 56kDa, identified as cytokeratin 5 and 6 respectively. It shows no reaction with keratin 1, 8, or 19. It stains the basal cells of squamous and glandular epithelia, part of stratum spinosum of squamous epithelium, myoepithelium, and mesothelium. It does not stain adenous epithelium. Therefore, this antibody can be used to distinguish squamous carcinoma from adenocarcinoma, and to differentiate epitheliod mesothelioma from non-epitheliod mesothelioma and adenocarcinoma. It is also a useful antibody in the identification of mesothelioma and lung squamous cell carcinoma. It does not react with pulmonary adenocarcinoma.

## Application Notes

Optimal dilution of the Cytokeratin 5/6 antibody should be determined by the researcher.

## Immunogen

Recombinant full-length human KRT5 protein was used as the immunogen for the Cytokeratin 5/6 antibody.

## Storage

Store the Cytokeratin 5/6 antibody at 2-8oC (with azide) or aliquot and store at -20oC or colder (without azide).