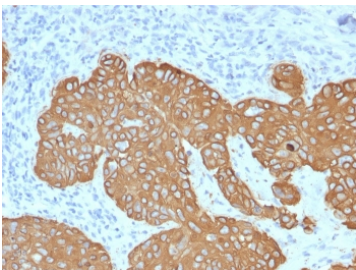


Cytokeratin 5 Antibody / KRT5 [clone KRT5/2080] (V7911)

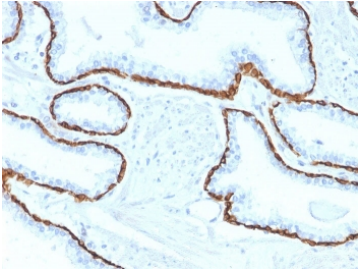
Catalog No.	Formulation	Size
V7911-0.5ML	Culture supernatant with 0.05% sodium azide	0.5 ml
V7911-0.1ML	Culture supernatant with 0.05% sodium azide	0.1 ml

[Bulk quote request](#)

Availability	1-3 business days
Species Reactivity	Human
Format	Culture supernatant
Host	Mouse
Clonality	Monoclonal (mouse origin)
Isotype	Mouse IgG1, kappa
Clone Name	KRT5/2080
Purity	Culture supernatant
UniProt	P13647
Localization	Cytoplasmic
Applications	Immunohistochemistry (FFPE) : 1:50-1:100
Limitations	This Cytokeratin 5 antibody is available for research use only.



IHC staining of FFPE human basal cell carcinoma with Cytokeratin 5 antibody (clone KRT5/2080). HIER: boil tissue sections in pH 9 10mM Tris with 1mM EDTA for 20 min and allow to cool before testing.



IHC staining of FFPE human prostate carcinoma with Cytokeratin 5 antibody (clone KRT5/2080). HIER: boil tissue sections in pH 9 10mM Tris with 1mM EDTA for 20 min and allow to cool before testing.

Description

This MAb recognizes a protein of 58kDa, which is identified as Cytokeratin 5 (KRT5). This type II cytokeratin is specifically expressed in the basal layer of the epidermis with family member KRT14. Antibodies to KRT5 identify basal cells of squamous and glandular epithelia, myoepithelia, and mesothelium. Anti-cytokeratin 5 has been reported useful in the differential diagnosis of metastatic carcinoma in the pleura versus epithelioid mesothelioma. Almost all squamous cell carcinomas, half of transitional carcinomas, and many undifferentiated large cell carcinomas express. Anti-KRT5, along with anti-p63, affords a high sensitivity and specificity for squamous differentiation. Myoepithelial cells of the breast, glandular epithelia, and basal cells of the prostate are labeled with anti-KRT5.

Application Notes

Optimal dilution of the Cytokeratin 5 antibody should be determined by the researcher.

Immunogen

A recombinant human partial protein (amino acids 318-491) was used as the immunogen for this Cytokeratin 5 antibody.

Storage

Store the Cytokeratin 5 antibody at 2-8oC (with azide) or aliquot and store at -20oC or colder (without azide).