

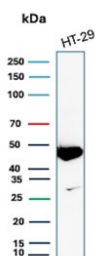
Cytokeratin 20 Antibody [clone KRT20/7805R] (V4493)

Catalog No.	Formulation	Size
V4493-100UG	0.2 mg/ml in 1X PBS with 0.1 mg/ml BSA (US sourced), 0.05% sodium azide	100 ug
V4493-20UG	0.2 mg/ml in 1X PBS with 0.1 mg/ml BSA (US sourced), 0.05% sodium azide	20 ug
V4493SAF-100UG	1 mg/ml in 1X PBS; BSA free, sodium azide free	100 ug

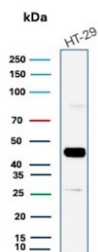
Recombinant **RABBIT MONOCLONAL**

[Bulk quote request](#)

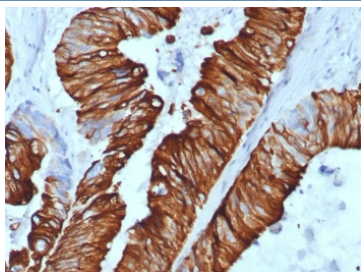
Availability	1-3 business days
Species Reactivity	Human
Format	Purified
Clonality	Recombinant Rabbit Monoclonal
Isotype	Rabbit IgG, kappa
Clone Name	KRT20/7805R
Purity	Protein A/G affinity
UniProt	P35900
Localization	Cytoplasm
Applications	Immunohistochemistry (FFPE) : 1-2ug/ml for 30 minutes at RT Western Blot : 2-4ug/ml
Limitations	This Cytokeratin 20 antibody is available for research use only.



Western blot testing of human HT29 cell lysate with Cytokeratin 20 antibody. Predicted molecular weight ~46 kDa.



Western blot testing of human HT29 cell lysate with Cytokeratin 20 antibody. Predicted molecular weight ~46 kDa.



IHC staining of FFPE human colon carcinoma tissue with Cytokeratin 20 antibody (clone KRT20/7805R). HIER: boil tissue sections in pH 9 10mM Tris with 1mM EDTA for 20 min and allow to cool before testing.

Description

This mAb recognizes an intermediate filament protein of 46kDa, identified as cytokeratin 20 (KRT20). KRT20 is abundantly expressed in goblet cells and enterocytes of the gastrointestinal tract. It is a useful marker of pancreatic and colorectal cancer. KRT20 is expressed under normal, hyperplastic and neoplastic conditions. It has been detected in adenocarcinomas of the colon, stomach and biliary tract. Breast carcinomas are generally non-reactive.

Application Notes

Optimal dilution of the Cytokeratin 20 antibody should be determined by the researcher.

Immunogen

A recombinant fragment of human KRT20 protein (within amino acids 324-424) was used as the immunogen for the Cytokeratin 20 antibody.

Storage

Aliquot the Cytokeratin 20 antibody and store frozen at -20oC or colder. Avoid repeated freeze-thaw cycles.